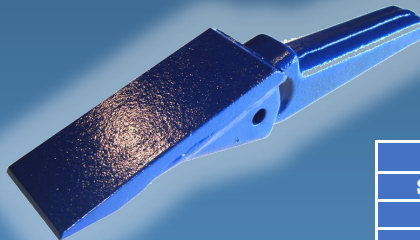
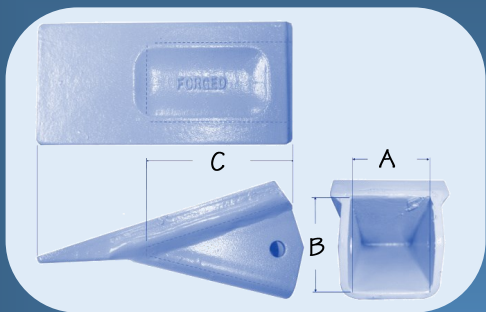


Crimp-on Side Pin Connection

H&L® Crimp-on Style Tooth System

Very High Possibility



The "Crimp-on" style tooth system is an H&L® Tooth Company original design that dates back to the late 1930s. The Crimp-on design over the last half of the twentieth century have been sold by many OEM. Companies like Case®, Deere®, Ditch Witch®, Ford®, Gannon®, Woods®; all offered H&L® fabricated teeth as their own.

H&L® Crimp-on Series			
Size	A	B	C
0	0.76"	0.56"	1.38"
00	1.01"	0.81"	1.88"
1 3/4	0.76"	1.50"	2.88"
1L	1.01"	1.80"	3.38"
2A	1.01"	1.20"	2.25"
3C	1.51"	1.50"	2.75"

H&L fabricated teeth are still manufactured in the
USA, Tulsa, Oklahoma...