

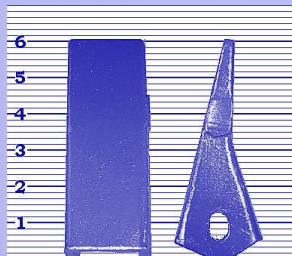
230 Series Backhoe Teeth

Value-Cast 230 Series Line-up!



©H&L Tooth Company 2018

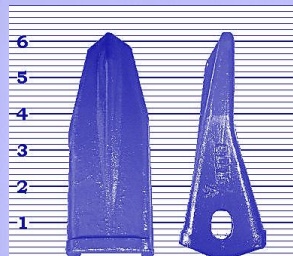
230CSP 2.7#



Cast Sharp Penetration

●H&L Factory Inspected for QUALITY.

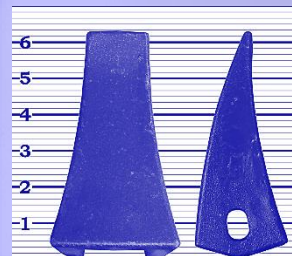
230CST 2.6#



Cast Star Ripping Design

●H&L Factory Inspected for QUALITY.

230TF 3.9#



Cast Fangs Design

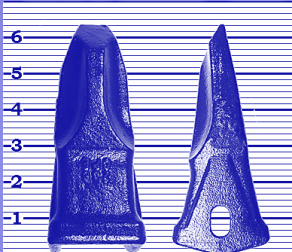
●H&L Factory Inspected for QUALITY.

WARRANTY

All H&L® Value-Cast products are factory inspected and covered under H&L's standard warranty program.

H&L® cast products are made from Chrom-Moly-Nickel steel alloy.

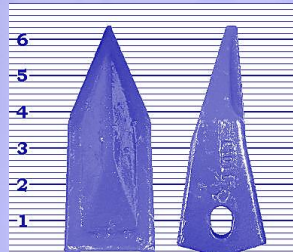
230CPE 2.6#



Cast Rock Penetrator Design

●H&L Factory Inspected for QUALITY.

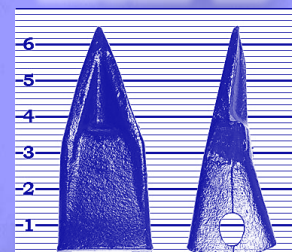
230THD 3.1#



Cast Single Sharp Design

●H&L Factory Inspected for QUALITY.

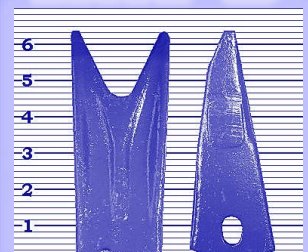
230TL 2.1#



Cast Long Single Sharp Design

●H&L Factory Inspected for QUALITY.

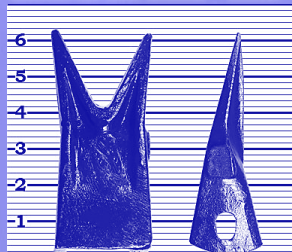
230TW 3.9#



Cast Twin Sharp Design

●H&L Factory Inspected for QUALITY.

230WTL 2.1#



Cast Long Twin Sharp Design

●H&L Factory Inspected for QUALITY.

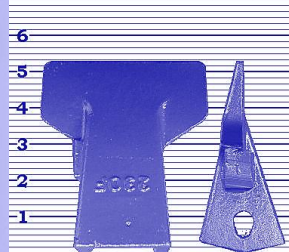
230TR3 4.5#



Cast Triple Tiger® Design

●H&L Factory Inspected for QUALITY.

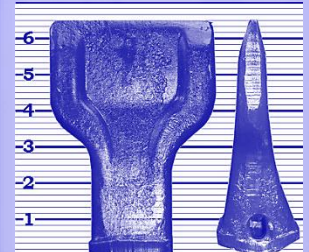
230CF 3.5#



Cast Flared Tooth

●H&L Factory Inspected for QUALITY.

230CHF 4.0#



Cast Heavy Duty Flared

●H&L Factory Inspected for QUALITY.

®Is a registered trademark of the respectively named Company.

All manufacturer's names, numbers, symbols and descriptions are used for reference purposes only.