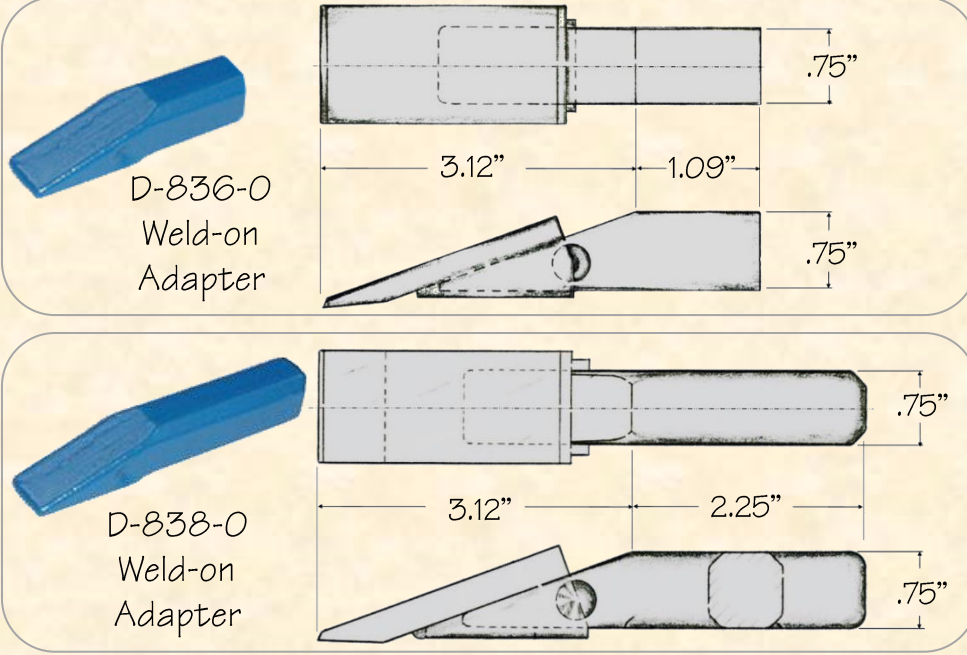


T189.2020

**QUALITY**  
since 1931

© H&L Tooth Company 2020

To the right is page 18 from H&L's 1960's Sales Manual. This catalog was distributed worldwide and features the H&L two-part tooth systems from the early days of construction.



H&L's small trenching Adapters are produced from aircraft quality Chrom-Moly-Nickel grade alloy steels to enhance adapter **DURABILITY** and **TOUGHNESS!**

*ORIGINAL PRODUCT*

**H&L® TOOTH COMPANY**

*Factory Direct Made in Tulsa, Oklahoma*

The "OEM" Crimp-on Style TRENCHING ADAPTERS

**D-836-0**

Small Trencher Adapter  
0.40#/10.18kgs.

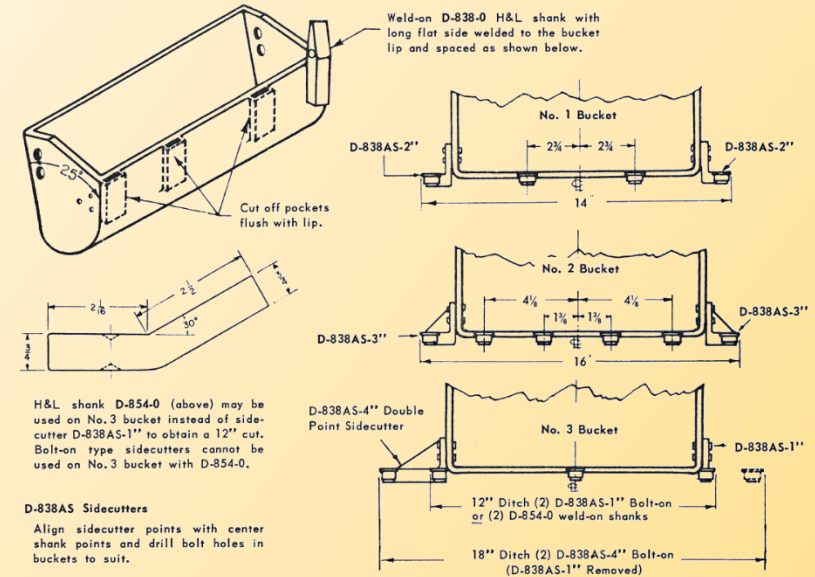
**D-838-0**

Small Trencher Adapter  
0.50#/10.23kgs

TRENCHER DATA

EVERETT TRENCHER

MODEL "S" TRENCHER with 10" CAST BUCKETS



MODEL "S"

CAST 10" buckets have pockets cast into the lip which are used to insert slip-in type teeth. These pockets must be removed in order to weld H&L teeth in place - see details above. Center shanks D-838-0 are welded with the LONG side of the shank mounted to the bucket and are to be spaced over three buckets. Bolt-on type sidecutters are available for cutting 12, 14, 16 and 18" trench widths and a weld-on type sidecutter D-854-0 is available to cut a 12" wide trench. If at any time, however, an 18" trench is required, the weld-on type 12" sidecutter mounted on bucket number 3 prohibits installation of the 18" bolt-on type sidecutter. Requirements to dig all widths are as follows:

- (35) D-838-0 Center Shanks
  - (10) D-838AS-1" Bolt-on Sidecutters - 12" Trench (D-854-0 Weld-on)\*
  - (10) D-838AS-2" Bolt-on Sidecutters - 14" Trench
  - (10) D-838AS-3" Bolt-on Sidecutters - 16" Trench
  - (10) D-838AS-4" Bolt-on Sidecutters - 18" Trench
- \*D-854-0 cannot be used if bucket line ever converted to dig 18" wide

FABRICATED 11" buckets, early model "S" trenchers 1949 & earlier, use shanks D-838-0 with the SHORT side of the shank welded to the bucket. Use bolt-on sidecutters D-838S-1½"; 2½ or 3½" trench widths.

MODEL 60 (Refer to next page)

Data Page 18

**H&L TOOTH COMPANY SALES MANUAL**  
Section Revised: 4/15/63

Section III - Trenchers

*H&L Tooth Company History since 1931:*

*The D-836-0 weld-on trenching adapter was first designed and introduced by the H&L Tooth for the Jeep-A-Trench OEM in 1948.*

*The D-838-0 weld-on trenching adapter was introduced by the H&L Tooth for the Everett Trencher Company, also in 1948.*

*Today, H&L continues to produce the "Original" D-836-0 and D-838-0 adapters and OSP tooth systems.*