

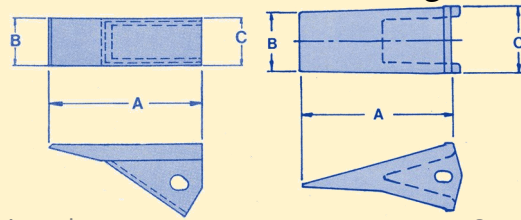
# Teeth, Weld on and Bolt on Adapters

## 24 and 240 Series



© H&L Tooth Company 2015

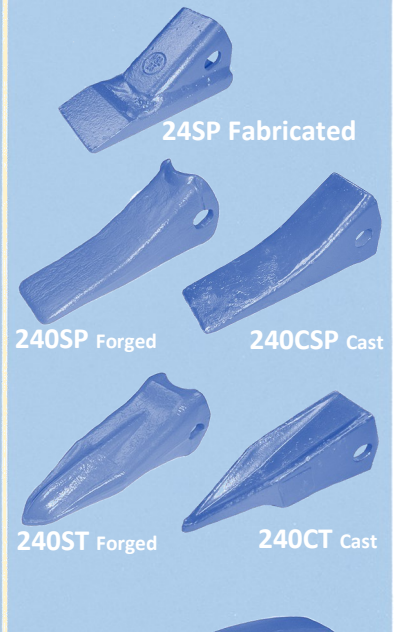
### Fabricated, Cast and Forged Teeth



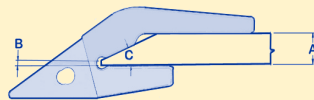
Fabricated

Cast & Forged Tooth

Case Number	H&L Number	Tooth Styles	A	B	C
D39039 7703113	24SP	Sharp	6.50"	2.25"	2.25"
L55608 87411607	240SP	Sharp	7.25"	2.20"	2.20"
R54258	240ST	Star	7.62"	0.19"	2.20"
L55608	240CSP	Sharp	7.25"	2.30"	2.30"
9624498	240CT	Tiger	7.62"	0.25"	2.30"



### Weld on Series Adapter



1W STYLE

Case Number	H&L Number	Styles	A	B	C
ZJZ2740KW 7703112	2740-KW-24	1W	1.06"	0.38"	23

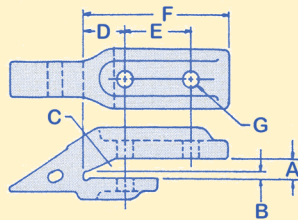


1W Style Adapter

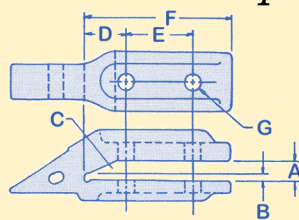


1B Style Bolt on Adapter

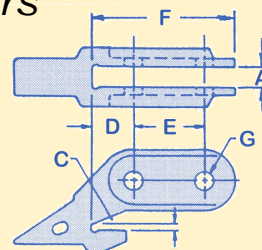
### Bolt on Series Adapters



1 Style

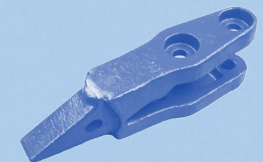


1A Style

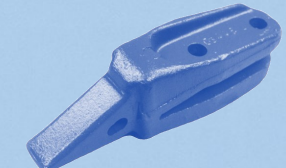


1A-COR Style

Case Number	H&L Number	Styles	A	B	C	D	E	F	G
B91266	L-3445-D-24	1A	0.81"	0.19"	23	2.25"	3.00"	6.12"	0.69"
B91267	L-3679-24	1A-COR	1.06"	0.62"	23	2.75"	3.75"	7.85"	0.81"
B91288	L-3679-A-24	1A	1.06"	0.41"	23	2.75"	3.75"	7.85"	0.81"
B91271	L-2021-F-24	Drott	0.81"	0.28"	25	3.38"	3.00"	7.38"	0.69"
B91274	240-110-08	1	1.06"	0.25"	30	2.50"	3.50"	7.25"	0.69"
B91278	240-112-06	1	1.31"	0.44"	30	2.50"	3.50"	7.25"	0.69"
R33529	240-110-13	1	1.03"	0.44"	24	2.75"	3.75"	7.50"	0.69"
B91272	L-4108-BF-24	1B	1.00"	0.19"	23	2.46"	3.50"	7.00"	0.69"



Drott Style Adapter



1 Style Bolt on Adapter



1A Style Bolt on Adapter



1A-COR Style Bolt on Adapter