

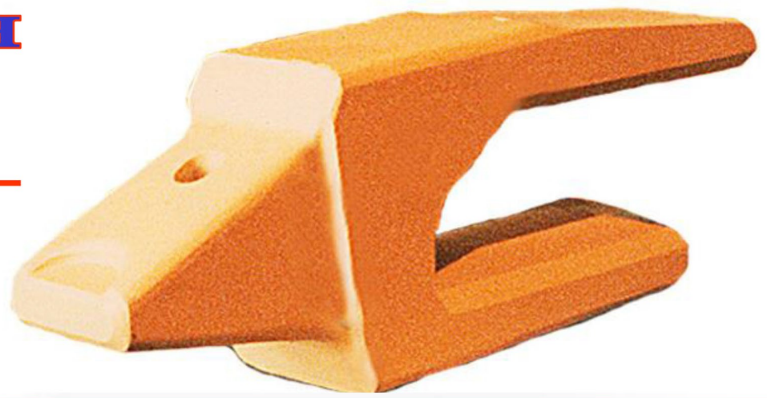
1-800-HL TOOTH

H&L Tooth Company

10055 East 56th Street North, Tulsa, Oklahoma 74117

DESIGNED FOR H&L 500 SERIES UNIFORGED® TEETH

541 System - 543 System - 546 System
produced from High Silicon HL-400 Steels



WELD-ON MINING ADAPTER SYSTEMS



Vertical Pin Tooth
UPGRADE

NEW FLEXHOL®

- Uniforged® Mining Teeth for greater durability!
- Solid Steel Flexhol®, attachment pin holds Tooth tight on the Adapter nose!
- Flexible hole Insert assures alignment and Pin locking!



QUALITY
since 1931

FLYER 24.2002a



Solid Steel PIN

Flexible INSERT

H&L® UNIFORGE® TOOTH TECHNOLOGY!

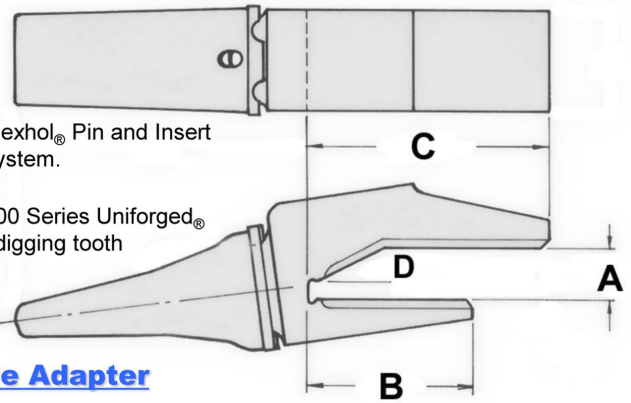
H&L quality personnel gauge inspect every 500 series Tooth produced to ensure optimum fit between Adapter-nose and Tooth-pocket bearing surfaces. H&L 500 series Flexhol attachment keep Teeth tight to the mating Nose, lowering maintenance costs, minimizing equipment downtime!

MANUFACTURED UNDER ONE OR MORE PATENTS

H&L® TOOTH COMPANY *Vertical-Pin* ADAPTER SYSTEMS



H&L® 500 Series Weld-On Mining Adapters for Front End Loaders, Face Shovels and Excavators.



1W Style Adapter

PART #	STYLE	LIP SIZE A	BOTTOM LEG B	TOP LEG C	LIP ANGLE D	ADAPTER WEIGHT Lbs/kgs	APPLICATIONS
3764-W-541	1W/3811	2.36"/60mm	6.75"/171mm	13.50"/343mm	30	115/52	Hydraulic Shovels & Hoes
L-3769-W-541	1W/5869	2.50"/63mm	8.50"/216mm	14.38"/365mm	25	120/54	Front End Loader
L-3782-W-541	1W	2.50"/63mm	13.50"/343mm	17.50"/444mm	23	160/73	Cat 992 Front End Loader
L-3782-W-543	9W9704						
3765-W-541	1W/3858	2.75"/70mm	6.75"/171mm	13.50"/343mm	30	115/52	Hydraulic Shovels & Hoes
L-6016-W-541	1W	2.75"/70mm	6.75"/172mm	13.50"/343mm	25	115/52	Komatsu WA-600 Loader
L-6016-W-543							
L-3770-W-541	1W/1856	3.00"/76mm	8.75"/222mm	16.50"/420mm	25	135/61	Front End Loader
L-3783-W-541	1W	3.00"/76mm	13.50"/343mm	18.00"/457mm	23	160/73	Cat 992 Front End Loader
L-3783-W-543	4T4704						
3766-W-541	1W/5898	3.15"/80mm	8.00"/203mm	15.50"/394mm	30	130/59	Hydraulic Shovels & Hoes
3766-W-543						140/64	
L-3784-W-543	1W	3.50"/90mm	10.50/267mm	20.00"/508mm	30	220/100	Cat 994 Front End Loader
L-3784-W-546	358-944						
3704-AW-541	1W	3.50"/90mm	12.00"/305mm	17.25"/438mm	25	240/109	P&H 1200 Hydraulic
3767-W-541	1W/2878	3.50"/90mm	8.94"/227mm	16.00"/407mm	30	130/59	Hydraulic Shovels & Hoes
3767-W-543						140/64	
3773-W-543	1W/6803	3.50"/90mm	8.00"/203mm	16.00"/406mm	30	175/79	Hydraulic Shovels & Hoes
3775-W-543	1W/2837	3.50"/90mm	9.70"/246mm	20.50"/520mm	30	255/116	Hydraulic Shovels & Hoes
3775-W-546						265/120	
L-3771-W-541	1W/5838	3.50"/90mm	8.75"/222mm	17.00"/432mm	30	130/59	Front End Loader
L-3771-W-543						140/64	
L-3772-W-541	1W/5839	3.50"/90mm	8.19"/208mm	16.50"/420mm	30	145/66	Front End Loader
L-3772-W-543						155/70	
3768-W-541	1W/6805	3.54"/90mm	7.75"/197mm	15.50"/394mm	30	120/54	Hydraulic Shovels & Hoes
3768-W-543						130/59	
3774-W-543	1W/6804	3.93"/100mm	8.00"/203mm	16.00"/406mm	30	170/77	Hydraulic Shovels & Hoes
3774-W-546						180/81	
3708-AW-543	1W	4.00"/100mm	20.00"/508mm	20.00"/508mm	45	245/111	P&H 1550 Hydraulic
3776-W-543	1W/5897	4.00"/100mm	9.70"/246mm	20.50"/520mm	30	255/116	Hydraulic Shovels & Hoes
3776-W-546						265/120	
L-3777-W-546	1W/5894	4.00"/100mm	10.50"/267mm	21.50"/546mm	30	250/113	Front End Loader
L-3778-W-546	1W/5896	4.00"/100mm	9.70"/246mm	21.00"/534mm	30	260/118	Front End Loader
L-3785-W-546	1W	4.00"/100mm	13.50"/343mm	17.50"/444mm	23	225/102	Cat 994 Front End Loader
	6I8804						
3779-W-546	1W/3869	4.75"/120mm	13.00"/330mm	22.00"/559mm	30	350/159	Hydraulic Shovels & Hoes
3780-W-546	1W/6801	5.00"/127mm	13.00"/330mm	22.00"/559mm	30	350/159	Hydraulic Shovels & Hoes
3709-W-546	1W	5.50"/140mm	10.00"/254mm	20.00"/508mm	45	370/168	P&H 2550 Hydraulic
3720-W-546	1W	5.50"/140mm	13.00"/330mm	19.00"/483mm	30	425/193	Hitachi 3500 Excavator
3781-W-546	1W/6806	5.50"/140mm	13.00"/330mm	22.00"/559mm	30	420/190	Hydraulic Shovels & Hoes

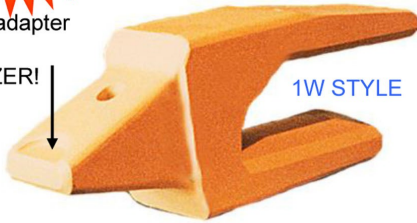
H&L[®] TOOTH COMPANY *Vertical-Pin ADAPTER SYSTEMS*



QUALITY
since 1931

EASY Vertical Pin
installation and removal

Tooth to adapter
Nose
STABILIZER!



1W STYLE

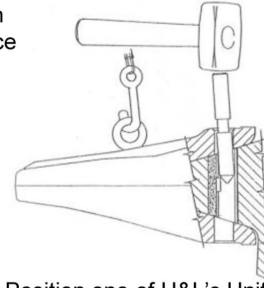
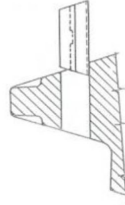
Chrom-Moly-Nickel adapter steels!

Adapter systems are INDIVIDUALLY SERIALIZED !

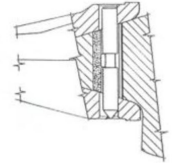
FLEXHOL[®] ATTACHMENT - INSTALLATION & REMOVAL



Push Flexhol[®] Insert
into adapter nose until
Insert flange is flush
with the nose surface



Insert SOLID STEEL PIN as
shown and drive with a
hammer (4 pound minimum).
Continue to drive pin into the
Insert Sleeve until LOCK has
engaged slot in Pin. Pin will be
flush with the top of the tooth.



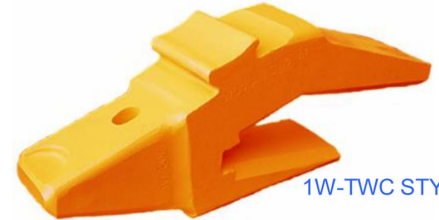
Position one of H&L's Uniforged[®] 500
series mining teeth on the adapter nose.



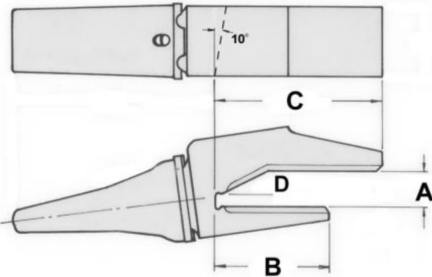
1W-RH/LH STYLE



1W-CORNER STYLE

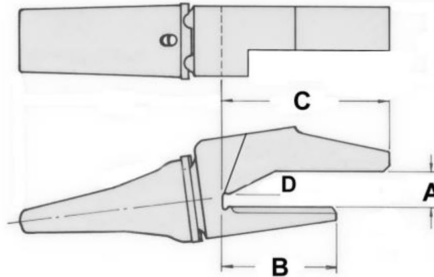


1W-TWC STYLE



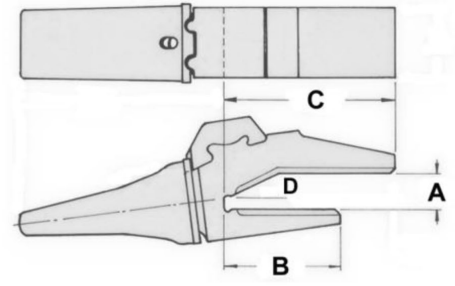
1W-RH/LH for SPADE LIPS

Same part number as !W style except add
a "RH" or "LH" to the overall number
example: 3764-W-541RH(Right Hand) shown
or 3764-W-541LH(Left Hand)



1W-CORNERS

Same part number as !W style except add
a "D" or "E" to the overall number
examples: 3764-DW-541(Right hand)
or 3764-EW-541 (Left hand) shown
For SPADE lips use "FW" or "GW"



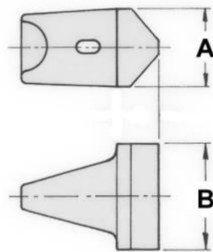
1W-TWC with WEAR CAPS

Same part number as !W style except add the
"TWC" to the overall number.
Example: 3764-WTWC-541 shown
NOT AVAILBLE IN CORNERS

H&L[®] Weld-On Mining Nosepieces for ALL Front End Loaders, Face Shovels and Excavator Adapters

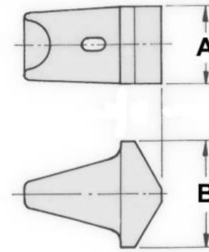
B STYLE
Nosepiece

**FIXED NOSE
ANGLE**



C STYLE
Nosepiece

**ADJUSTABLE
NOSE ANGLE**



PART #	STYLE	ADAPTER WIDTH A	ADAPTER HEIGHT B	TOOTH GROUP	ADJUSTABLE DIGGING ANGLE	NOSEPIECE WEIGHT Lbs/kgs	APPLICATIONS
NP-541-B	B	6.50"/165mm	9.00"/229mm	541	NO	85/39	541 Repair or conversion
NP-541-C	C	6.50"/165mm	9.00"/229mm	541	YES	85/39	541 Repair or conversion
NP-543-B	B	8.50"/216mm	11.00"/279mm	543	NO	95/43	543 Repair or conversion
NP-543-C	C	8.50"/216mm	11.00"/279mm	543	YES	95/43	543 Repair or conversion
NP-546-B	B	8.50"/216mm	12.00"/305mm	546	NO	170/77	546 Repair or conversion
NP-546-C	C	8.50"/216mm	12.00"/305mm	546	YES	172/77	546 Repair or conversion

H&L Teeth are **UNIFORGED[®]** in the USA from high silicon Chrom-Moly-Nickel alloy steels, enhancing durability & long lasting sharpness!

© H&L Tooth Company 2015



SP style

Sharp Penetrating Tooth
Centerline general purpose tooth for heavy duty mining applications. Provides high wear material and paneled design for penetration.



RK style

Rock Tooth
Centerline heavy tooth for heavy duty rock applications. Provides high wear material and good penetration.



P style

Penetrating Tooth
Centerline sharp chisel style tooth for general purpose mining applications. Provides slim penetration profile with narrow tooth width.



RXH style

Rock Extra Heavy Tooth
Centerline heavy duty tooth design for severe duty front end loaders and shovels. Provides high wear material and paneled for self-sharpening.



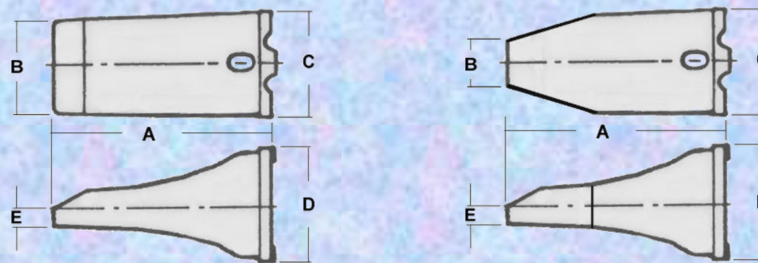
RPS style

Rock Extra Heavy Tooth
Centerline heavy duty tooth design for severe duty front end loaders and shovels. Provides high wear material and paneled for self-sharpening with narrow tooth width giving greater penetration.



SS style

Short Sharp Tooth
Centerline heavy duty tooth design for severe duty mining applications. Provides shorter profile to reduce tooth leverage loading.



PART #	TOOTH LENGTH A	DIGGING WIDTH B	TOOTH WIDTH C	TOOTH HEIGHT D	DIGGING END E	TOOTH WEIGHT LBS/KGS
541SP-R	17.00"/432mm	5.80"/147mm	7.00"/178mm	8.60"/218mm	1.50"/38mm	94/43
541P-R	17.00"/432mm	3.60"/91mm	7.00"/178mm	8.60"/218mm	1.10"/28mm	105/48
541RK-R	18.00"/456mm	6.90"/175mm	7.30"/185mm	8.60"/218mm	2.40"/61mm	122/55
543SS-R	17.30"/439mm	8.00"/203mm	8.23"/209mm	8.60"/218mm	1.20"/30mm	125/57
543RK-R	19.30"/490mm	8.00"/203mm	8.21"/208mm	8.60"/218mm	2.20"/57mm	138/63
546SS-R	18.00"/457mm	8.25"/209mm	9.00"/229mm	10.00"/254mm	1.50"/36mm	160/73
546SP-R	20.00"/508mm	8.00"/203mm	9.00"/229mm	10.00"/254mm	1.50"/38mm	185/84
546RPS-R	20.00"/508mm	3.50"/89mm	9.00"/229mm	10.00"/254mm	1.50"/38mm	185/84
546RXH-R	20.00"/508mm	8.00"/203mm	9.00"/229mm	10.00"/254mm	1.50"/38mm	215/98