



1-800-HL TOOTH
Tooth Company

FLYER 74.2004

10055 East 56th Street North, Tulsa, Oklahoma 74117

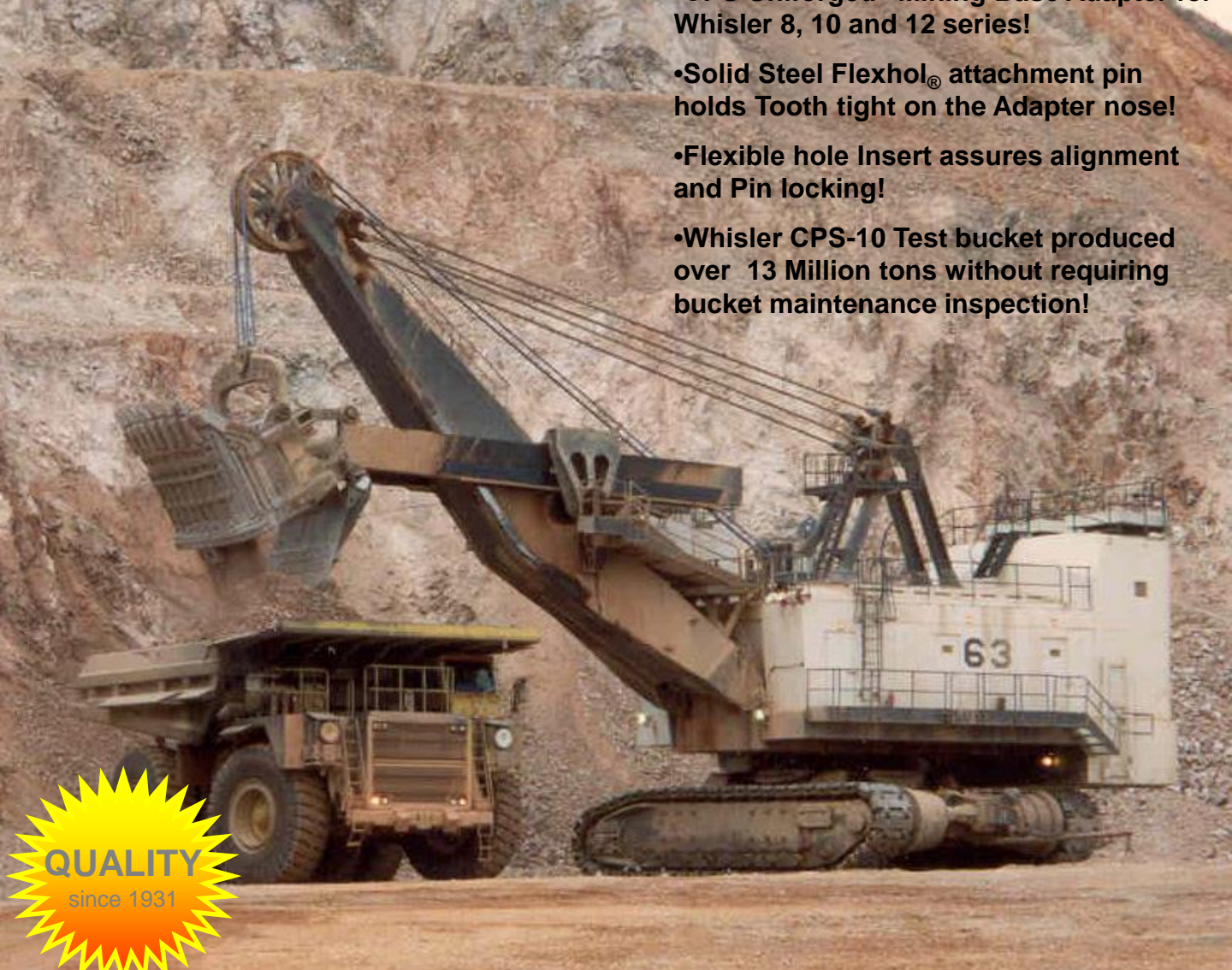


NON-BREAKABLE STABILIZER

CPS NON-BREAKABLE STABILIZATION FOR WHISLER MINING SYSTEMS

© H&L Tooth Company 2015

- CPS Uniforge® Mining Base Adapter for Whisler 8, 10 and 12 series!
- Solid Steel Flexhol® attachment pin holds Tooth tight on the Adapter nose!
- Flexible hole Insert assures alignment and Pin locking!
- Whisler CPS-10 Test bucket produced over 13 Million tons without requiring bucket maintenance inspection!



H&L® UNIFORGE® C·P·S TECHNOLOGY!

A NEW COMPLETE STABILIZING TOOTH AND ADAPTER SYSTEM FOR THE NEXT GENERATION OF CONSTRUCTION AND MINE EXCAVATION INDUSTRY.

H&L 500 series Flexhol® attachment keep Teeth tight to the mating Nose, lowers maintenance costs, minimizing equipment downtime!

MANUFACTURED UNDER ONE OR MORE PATENTS

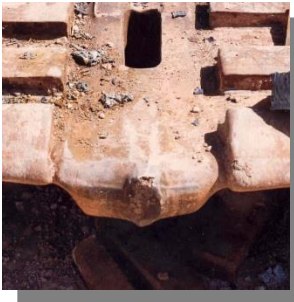
CPS WHISLER CONVERSION!

Tired of the constant maintenance battle in repairing Whisler bucket lip and stabilization!



UNABLE TO REPAIR WHISLER STABILIZER UNITS?

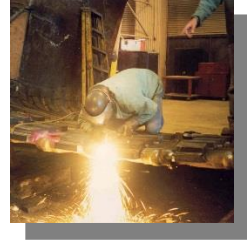
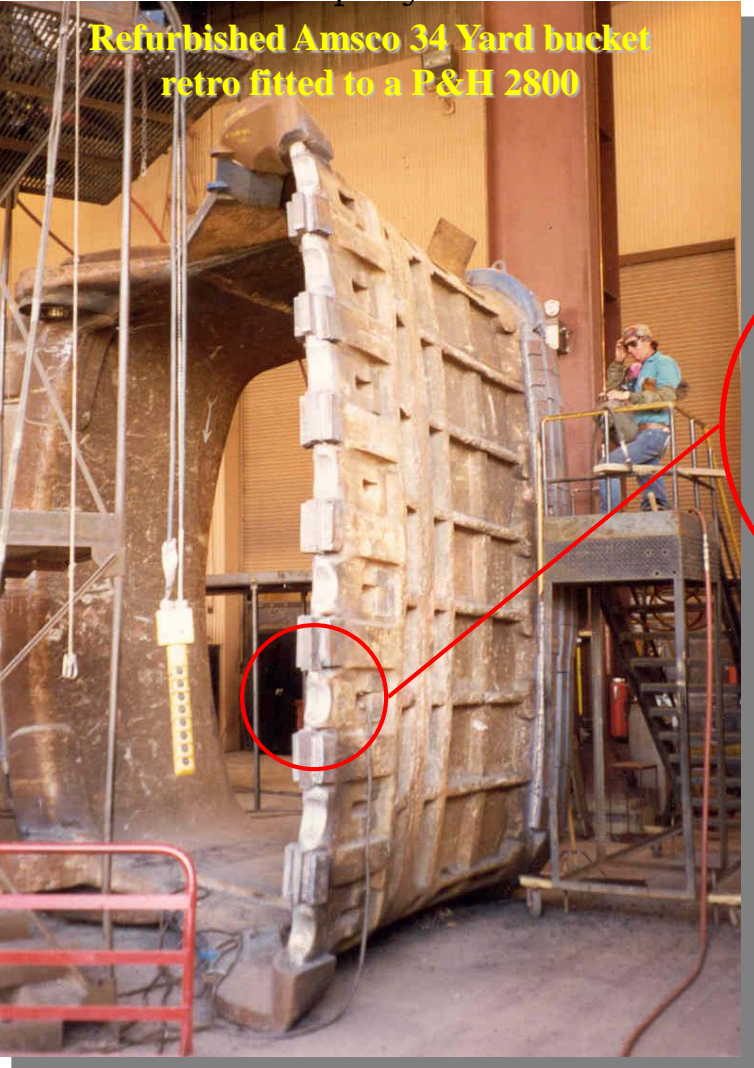
Bring that Whisler 8, 10 or 12 bucket lip back to life with H&L's patented and revolutionary CPS connection!



Stabilizer repairs have now become a thing of the past!
 With the CPS attachment your bucket-to-base adapter connection receives a NEW stabilizer unit with every base adapter change out... **GUARANTEED!**

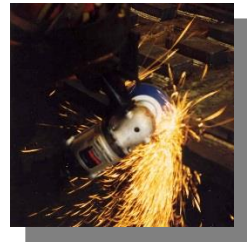
© H&L Tooth Company 2015

Refurbished Amsco 34 Yard bucket retro fitted to a P&H 2800



IT'S AS EASY AS...

FLAME CUT... Removal of the existing stabilizer by using H&L furnished gauging and instructions.



GRINDING... Hand grinding of the rough flame cut surfaces to flatness Whisler mining fit tolerances and blended corner radii

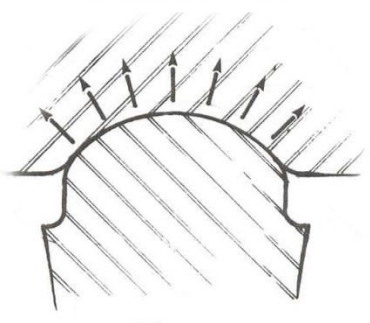


CPS FITTING... Complete set of instructions with picture review are supplied with every CPS gauge system... making for an easy **CONVERSION!**

Whisler Style Alignment No Longer A Maintenance Problem!



- ✓ Increased digging force distribution transfers into the Circular bearing Periphery System surfaces.
- ✓ Circular bearing Periphery System surfaces become a non-breakable side-to-side stabilizer.
- ✓ CPS adds up to 45% more steel at the stabilizer making the connection stronger than conventional Whisler designs.



Whisler field fit repair problems are eliminated with patented CPS Attachment!



3 Months... CPS-10 stabilizer after 3.1 million tons of material moved.



7 Months... The same stabilizer unit after 6.9 million tons of material has been removed.



12 Months... The same stabilizer unit after 11.7 million tons of material has been removed.



FLEXHOL®

Attachment Systems

FIELD PROVEN
for over 10 years

Solid, round pinning system, constructed from Chrom-Moly **HARDENED** steels!

Locking groove guarantees **POSITIVE LOCK!**



Solid steel pin and mechanical locks encapsulated in elastomer pin "jack out"!



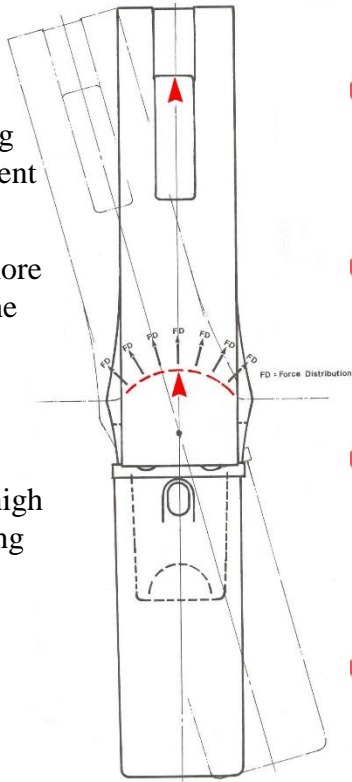
Flexhol Inserts use shock absorbing **ELASTOMER** with aircraft quality alloy steel support tube and mechanical locks for **STRENGTH!**

© H&L Tooth Company 2015



14 Months... The same CPS-10 bucket lip stabilizer unit and CPS-10 base adapter after 13.2 million tons of material has been removed.

CPS BEARING



✓ H&L forged alloy base adapter for Whisler 8-10-12 conversion!

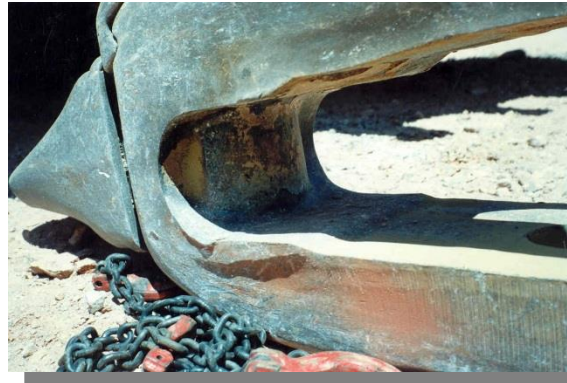
✓ Uses conventional Whisler Key and clamp attachment.

✓ H&L offers a new 3-piece, remove from the top key and clamp attachment system.

✓ Precision lip fit-up exceeding OEM specifications.



NEW WHISLER CPS-10 BASE ADAPTER... CPS supplies a new stabilizer with every new Base Adapter!



14 Months... CPS-10 stabilizer unit remains functional after 13.2 million tons moved.

✓ CPS base adapter male stabilizer increases overall adapter cross section at the lip connection, making a stronger attachment system.

✓ Adds up to 45% more wear material to the base adapter!

✓ Heavy-Duty Uniforged® from high silicon alloy digging tooth

✓ H&L® 500 Series tooth-to-adapter connection uses patented Flexhol® Technology!

500 SERIES TEETH

© H&L Tooth Company 2015

- 2 1/2" thick 992 Loader Test Bucket
- Uniforged® 541 Series "VP" Teeth
- Flexhol® Attachment System



CPS LOADER SYSTEMS - IDAHO TESTING