

Teeth that Really Dig



TOOTH COMPANY

MONTEBELLO

CALIFORNIA



BLAW-KNOX

Cap. Yds.	Bucket Number	Blaw-Knox No.	No. Teeth	H&L Shk. No.	Shank Type
3/8	661, 662, 663, 663RN	07455-3	5	C-1214B-25	3
				C-1195B-25	2
1/2	665, 666	07455-4	5	C-1130B-25	3
	665RN, 667, 667RN	07455-3	5	C-1214B-25	3
	604-1	07455-5	5	C-1525B-25	3
	607		6	C-1406B-25	2
5/8	608, 609	07455-4	5	C-1130B-27	3
	606			C-1336-27	5
3/4	608	07455-3	5	C-1214B-27	3
	671, 671RN, 672)	07455-2	5	C-1106B-27	3
	673, 673RN				
				C-1276B-27	3
7/8	611	07455-2	5	C-1106B-27 or C-1834B-27	3
	611			C-1178B-27	2
1	612	07455-2	5	C-1106B-27	3
	681		5	C-1595B-27	3
	0700, 0700RN)	08052-12	5	C-1751B-27	3
	0701, 0701RN)				
1-1/4				C-1177B-27	3
	0700, 0701 & RN	08052-12	5	C-1751B-27	3
1-1/2	716H		7	C-1394B-28 or C-2469D-32	3
	723S	08052-103	5	C-1743B-28	3
	703, 721(7 teeth), 701	08052-8	5	C-1747B-28	3
	0703			C-1624B-28	3A
				C-1472B-28 or C-2269B-28	3
1-5/8	0705	08052-103	5	C-1743B-28	3
1-3/4	705, 723	08052-8	5	C-1747B-28	3
	724H	08052-8	7	C-1747B-28	3
2	724H	08052-101	7	C-1332BA-28	3
	707	08052-8	7	C-1747B-28	3
	725, 725H	08052-9	7	C-1747B-28	3
	726H	08052-102	7	C-1742B-30	3
2-1/2	730S	08052-101	7	C-1332BA-30	3
	711, 713	08052-8	5	C-1747B-30	3
				C-1652B-30	3
	730-S-1	08052-106		C-1746B-30	3
2-3/4	731H	08052-105	7	C-1745B-30	3
3	734, 734S	08052-104	9	C-1744B-34	3
	731-IRN	08052-9	9	C-1748B-34	3
3-1/2	740S	08052-11	9	C-1750B-34	4
	735-03			C-1627B-34	3
	0735RN			C-1627B-32	3
4	7309-2	08052-10		C-1749B-	3
	0741-0			C-1976B-50	3
5	745-IRN		7	C-1534B-34	3A

MODELS & BUCKET SIZES

CLAMSHELL

BROWN HOIST ¾ Yard Bucket.....C-2163F (Type 2 Shank) 5 Yard Bucket.....C-1899BW-34 (Weld-on)

ERIE (Erie-Strayer Co., Erie, Pennsylvania)

Cap. Yds.	Erie Bucket Numbers	**Erie Tooth No.	Qty. Teeth	H&L Shank No.	Shank Type
1/4	SR-14, GP-14, X-2.....	T-78M	5	C-1225B-24	2
3/8	XLR-38	T-89P	5	C-1436B-25	2
	SR-38, GP-38, GP-38T, X-1.....	T-78M	5	C-1225B-25	2
	HD-38, HD-38T, T-1) XHD-38, XHD-38T.....)	T-67M	5	C-1066BA-25	1
	SR-12, GP-12, GP-12G,) XHD-12, XO, XOG.....)	T-67M	6	C-1066BA-25	1
1/2	HD-12, HD-12N, TO, TON.....	T-67M	5	C-1066BA-25	1
	SR-58.....	T-67M	6	C-1066BA-27	1
5/8	GP-58, XO1	T-74M*	5	C-1377B-27	1
	SR-34	T-67M	6	C-1066BA-27	1
3/4	GP-34, XO2, TO2N, TO2,) HD-34, HD-34N, XHD-34..)	T-74M*	6	C-1377B-27	1
	1	SR-1, GP-1, XO3, TO-3, HD-1, D-1....	T-74M*	7	C-1377B-27
1-1/4	SR-114, GP-114, XO4.....	T-74M*	7	C-1377B-27	1
	HD-114, TO-4, XHD-114.....	T-86M	6	C-1392B-27	1
1-1/2	SR-112, GP-112, XO5, D-112.....	T-74M*	7	C-1377D-37	1
	HD-112, TO-5, XHD-112.....	T-86M	6	C-1392B-28	1
1-3/4	SR-134, GP-134, XX5.....	T-74M*	7	C-1377B-28	1
	HD-134, TX-5, XHD-134.....	T-86M	6	C-1392B-28	1
2	SR-2	T-74M*	7	C-1377B-28	1
	GP-2, XO6, HD-2, TO6, XHD-2, D-2....	T-86M	7	C-1392B-30	1
2-1/2	SR-212	T-74M*	7	C-1392B-30	1
	GP-212, XO7, HD-212, TO-7,) XHD-212, D-212.....)	T-86M	7	C-1392B-30	1
	SR-3, GP-3, HD-3, XHD-3	T-86M	7	C-1392B-34	1
3	D-3	T-91M	8	C-1760B-34	3
	SR-312, GP-312, HD-312	T-86M	8	C-1392B-34	1
3-1/2	XHD-312, D-312	T-91M	8	C-1760B-34	3
	SR-4, GP-4	T-86M	8	C-1392B-34	1
4	HD-4, XHD-4, D-4	T-91M	8	C-1760B-34	3
	SR-412, GP-412, HD-412,) HXD-412, D-412.....)	T-91M	8	C-1760B-34	3
5	SR-5, GP-5, HD-5	T-91M	8	C-1760D-37	3
5-1/2	SR-512, GP-512, HD-512	T-91M	8	C-1760D-37	3
6	SR-6, GP-6	T-91M	8	C-1760D-37	3

* Some earlier models, TO & XO, used Erie T-68M tooth (H&L C-1577BC-) instead of T-74M. Check bucket with dwgs.

**Later Model Erie Tooth Numbers: Letter 'M' is replaced by '2'.



ESCO

3/8 & 1/2 Yd. H&L: C-2142-37 (1" lip Weld-on)
 1/2 Yd. (Esco 226) H&L: C-1281B-25 (Type 1 Shank)
 1/2 Yd. (Esco CS) H&L: C-1509B-25 (Type 1 Shank)
 3/4 Yd. (Esco 330) H&L: C-1281B-27 (Type 1 Shank)
 3/4 Yd. (Esco 336) H&L: C-1281B-27 (Type 1 Shank)

BUCYRUS-ERIE

Hydrocrane (5 teeth per bucket)
 2-Bolt Type 2 Shank H&L: C-1129B-24
 3-Bolt Type 2 Shank H&L: C-1381B-3C
 C-1381B-24
 Sidecutters H&L: C-850-3C

HAISS

GEORGE HAISS MFG. CO. Division of PETTIBONE MULLIKEN CORP.

Cap. Yds.	Model	Haiss Tooth No.	Qty. Teeth	H&L Shank No.	H&L Shank Type
1/4 & 1/3	TR	245-0225M	4	C-960B-24	2
		4905		C-960D-24	
3/8	HP	D-255-BH-5325	6	C-960B-25 or D-25	2
	GP	D-237-A-1442-B	6	C-1235BS-24*	3
1/2	GP & HP	D-255-BH-5325	6	C-960B-25 or D-25	2
		D-237-1442-B	6	C-1235B-25	3
5/8	GP & HP	D-255-BH-5325	6	C-960B-27 or D-27	2
		D-255-BH-5325	6	C-960B-27 or D-27	2
3/4	HP-H	D-173, B & C AH-2231-A	6	C-1531B-27 or C-2382B-27	1
				C-1196B-27	1
				C-1196D-27	1
1 & 1/4	GP	D-173, B & C	6	C-1196B-27	1
	HP	AH-2231-A		C-1196D-27	
1 1/2 & 1 3/4	GP	D-173, B & C	6	C-1196B-28	1
	HP	AH-2231-A		C-1196D-28	
2	GP	D-173-G	6	C-1196B-28	1
	HP	AH-7440		C-1196D-28	
2 1/2	HP	D-173-G AH-7440	6	C-1196B-34 or D-34	1

*C-1235BS-24 uses 1" spacer for last hole. Sidecutters for 5/8 Yd.: C-854A-3C 7/8 bolts at 3/8 ctrs.

HAYWARD

1 1/2 Yard K-6 H&L No. C-1492B-28 Shank Type 1

MODELS & BUCKET SIZES

CLAMSHELL

JOHNSON

Cap. Yds.	Model	Qty. Teeth	H&L Shank No.	Type
3/8	GP	6		
1/2	GP & HD	6	C-933B-25	1
3/4	GP & HD	6	C-933B-27 C-2122B-27	1
1	GP & HD	6		
1 1/4	GP	6		
1 1/2	GP	6	C-1116B-28	1
1 1/2	HD	6	C-1045B-28	1
2	GP & HD	6		
2 1/2	GP & HD	6		

GP—General Purpose Type TY-335-5

HD—Heavy Duty Type TY-355-2

All Johnson buckets should be checked with drawings.

KIESLER

Cap. Yds.	Model	H&L Shank No.	Shank Type
3/8	N	C-1107B-25	2
		C-1129B-24	2
		C-1143B-25	2
3/8 & 1/2		C-1374B-25	1
1/2		C-1938B-25	1
3/4		C-979B-27	1
3/4	H-660-6804	C-1694B-27	1
3/4		C-1469B-27	1
	H	C-1660B-28	1

McCAFFREY

Cap. Yds.	Model	McC. Tooth No.	Qty. Teeth/Bkt.	H&L Shank No.	H&L Type	Lip Thk.
1/4 & 3/8	D	10463	6	C-1170B-25	2	1"
1/2	D	10577	6	C-1035B-25	1	1 1/4"
5/8 & 3/4	D	10577	6	C-1035B-27	1	1 1/4"
1 & 1 1/4	D	10578	6	C-1035BA-27	1	1 1/2"
1 1/2 & 1 3/4	D	10579	7	C-1035BA-28	1	2"
1 1/2 & 1 3/4	D-4	10579	8	C-1035BA-28	1	2
2	D & D-4	10579	8	C-1035BA-30	1	2
2 1/2	D	10579	8	C-1035BA-30	1	2
3	D	11300	10	C-1713B-30	1	2"

Weld-on H&L shanks with 5 degree outpitch: C-1556BW-24, 25, 27 or 28.

3 Yard weld-on H&L shank: C-1714BW-30

Grapple: C-1554W-34, 50 or C-1554AW-34 (10 degrees up-pitch)

10 Ton Grapple: C-1844W-37 (weld-on 'S' type nosepiece)

Sidecutter: C-2054-3C (2-holes at 13/16" at 4 1/2" centers, Point at 33 deg. pitch)

ORTON

5/8 Yard Orton No. 352D-836.....H&L Shank: C-1275B-25 (Type 2, 3 Bolt)



OTTAWA

Hydraulic clamshell attachment used on Ottawa Hoe H&L Shank D-862-2A with 2A replaceable H&L points used as standard factory equipment.

OWENS and ANVIL

Type 'M' General Purpose

Cap. Yds.	Owens Size	Qty. Teeth/Bkt.	H&L Shank No.	H&L Type	Lip Thk.
1/4	23	5	C-1170DA-24	2	1"
3/8	123	5	C-1170D-24	2	1"
3/8	26	6	C-1170D-25	2	1"
1/2	126	6	C-1170D-25	2	1"
1/2	30	6	C-1111D-25	1	1-1/8
5/8	130	6	C-1111D-25	1	1-1/8
3/4	230	6	C-1111D-27	1	1-1/8
3/4	36	7	C-1111D-27	1	1-1/8
1"	136	7	C-1111D-27	1	1-1/8
1 1/4	236	7	C-1111D-27	1	1-1/8
1 1/4	140	7	C-1111D-27	1	1-1/4
1 1/2	146	8	C-1111D-28	1	1-1/4
2	246	8	C-1111D-28	1	1-1/4
2 1/2	160		C-1667D-37	1	
3	260		C-1667D-37	1	
6	77 Sq. Nose		C-2437D-33	1	

Type 'K' Material Handling Buckets

Owens Type 'K' Buckets are not drilled for teeth unless specified when ordered. Check bolt hole arrangement with drawing of shank in

Model 'S' Light Material Handling Buckets: Teeth not recommended by Owens

Rock Material Handling Type Teeth: Lip piece of shank inside & outside of bucket similar to Owens 'X' type.

- 1-9/16" L.O.H&L Shank: C-1238-27, 33, 37 (Type 5)
- 1-13/16" L.O.H&L Shank: C-1238A-37(Type 5)
- 2-1/16" L.O.H&L Shank: C-1238B-37(Type 5)
- 2-9/16" L.O.H&L Shank: C-1238D-37(Type 5)

For other sizes: Submit dimensional sketch of lip with diagram of bolt hole spacing.

Grapples - Weld-on Type Shanks

- Model: 65RAC-2270W-37
- Model: 78RAC-1635W-50
- Model: 86RAC-1594W-50
- Model: 90RAC-1654W-50
- Model: 510RBC-1721W-26
- Model: 610RAC-1664W-26

Owens: Continued next page

MODELS & BUCKET SIZES

CLAMSHELL

OWENS (Cont'd.)

Model 'D' (Heavy Duty) and Model 'DX' (Extra Heavy Duty)

Cap. Yds.	Owens Size	Qty. Teeth/Bkt.	H&L Shank No.	H&L Type	Lip Thk.
1/2	126	6	C-1170D-25	2	1-1/4
1/2	30	6	C-1111D-25	1	1-1/4
5/8	130	6	C-1111D-27	1	1-1/4
5/8		7	C-1086D-27	2	1-1/4
5/8			C-2368D-25	2	
5/8			C-2369D-25	2	
3/4	230	6	C-1111D-27	1	1-1/4
3/4	36	7	C-1111D-27	1	1-1/2
3/4			C-1473D-25	2	1-1/2
1	136	7	C-1111D-27	1	1-1/2
1-1/4	236	7	C-1111D-27	1	1-1/2
1-1/4	140	7	C-1111D-27	1	1-1/2
1-1/2	146	8	C-1111D-28	1	1-3/4
2	246	8	C-1111D-28	1	1-3/4
3			C-2271D-34	1	
5			C-1667D-37	1	

Model 'DX' Round Nose Type Buckets - Specify narrow points 26, 33, 37 and 50.

Cap. Yds.	Owens Size	Qty. Teeth/Bkt.	H&L Shank Number	H&L Type	Lip Thk.
1 1/4	236		C-1111D-37	1	1 1/2
3	260		C-1667D-50	1	1 3/4
5	368		C-2438D-33	1	

Owens Factory No.	H&L Shank No.
1072-L and 1072-S.....	C-1111D-25, 27, 28, 37
1172 and 1172-L.....	C-1170D-25
1272 R/L.....	C-846-3C
3772-6.....	C-1473D-25
6172.....	C-1667D-28, 34

Owens Factory No.	H&L Shank No.
7272.....	C-1111D-25, 27, 28, 37
22972.....	C-1111D-25, 27, 28, 37
23672.....	C-1111D-25, 27, 28, 37
24172-3.....	C-2437D-33
25672 (WW2).....	C-2438D-33



PMCO (Pettibone-Mulliken Co.)

Cap. Yds.	Model	PMCO No.	Qty. Teeth/Bkt.	H&L Shank No.	H&L Type
3/8	3-TC	003E-32C1	6	C-1122B-25	1
3/8	3-EL	003E-32C1	6	C-1122B-25	1
	3-E, 3-EA				
	3-EH				
1/2	4-EL	003E-32C1	6	C-1122B-25	1
	4-E	004E-032B	6	C-1193B-25	1
	4-EH, 4-EA				
3/4	6-EL	6	6	C-933B-27	1
	6E				
	6-EH				
3/4	6-EA (lug on bkt. between bolts)		6	C-933C-27	1
				C-1367B-27	2
				C-933B-27	1

QUICKWAY Impact Clamshell Bucket: D-907-3C with 3C Rock Points as standard factory equipment.

SCHIELD-BANTAM 3/8 Yd. (Schield-Bantam 42-B Solid Tooth).....H&L: C-1165B-24 (Type 2)

SHAWNEE Hydraulic Clamshell Attachment used on shawnee Hoe
H&L: D-862-2A with 2A points used as standard factory equipment.

SOREL 5/8 Yard.....H&L: C-1593B-25 (Type 2)

WELD-ON H&L TYPES

Unless otherwise noted, the following weld-on shanks are of like design as Type 2 bolt-on style.

- No. 24 Point.....C-1093BW-24
- No. 25 Point.....C-1093BW-25
- No. 27 Point.....C-1093BW-27
- No. 28 Point.....C-1093BW-28
- No. 30 Point.....C-1093BW-30
- No. 34 Point.....C-1093BW-34
- No. 37 Point.....C-1093BW-37
- No. 35 Point.....C-1652BW-35 (like Type 3 design)
- No. 50 Point.....C-1093DW-50

(Specify letter 'D' instead of 'B' for shank with 5 degree outpitch of point.)

MODELS & BUCKET SIZES

CLAMSHELL

WILLIAMS (Wellman Type)

Cap. Yds.	Size (MF-MH)	Wellman Pt. No.	Qty. Teeth/Bkt.	H&L Shank No.	H&L Type
3/8	10M-10E		6	C-1126B-25	2
3/8	10EN			C-1274B-25	2
1/2	12M		6	C-1126B-25	2
1/2	13M-13E		5	C-911BA-25	2
1/2	14M-14E		5	C-911BA-25	2
5/8	17M-17E		5	C-968B-25	1
5/8				C-1805B-27	4
3/4	19M-19E		5	C-968B-27	1
3/4	19E-7		5	C-911BA-27	2
3/4	20M-20E	T-175	5	C-968B-27	1
1	27M-27E		7	C-968B-27	1
1¼	34M-34E		7	C-968B-27	1
1½	40M-40E		7	C-968B-28	1
1½	40D-40DRM		7	C-968BA-30	1
1½	No. 3 Single Line	17-124-2S		C-1394B-28	1
2	54M-54E		9	C-968B-28	1
2	54DHRN	T-252-M	6	C-1712B-34	1
2½			9	C-968DB-34	1
3	81DHRN	T-202-M	8	C-1736B-34	1
				C-2296BW-34 *	Weld-on

Sidecutter: C-1898-25 (15/16" holes at 3½) 33 deg. point pitch.

*Similar Type 2 Shank

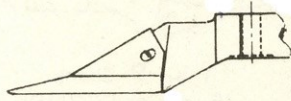
WILLIAMS (Favorite & Hercules)

Cap. Yds.	Favorite	Hercules	H&L Shank No.	Qty.	Type
3/8	10F	10H		5	
1/2	13F			5	
1/2	14F	14H	C-968B-25	5	1
5/8	17F	17H	C-968B-25	5	1
3/4	20F	20H	C-968B-27	5	1
1	27F	27H	C-968B-27	7	1
1¼	34F	34H	C-968B-27	7	1
1½	40F	40H	C-968B-28	7	1
2	54F	54H	C-968B-28	7	1
2½	68F	68H	C-968B-	9	1
3	81F	81H		9	
3½	94F			9	

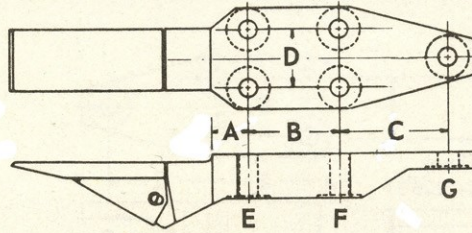
YAUN

Cap. Yds.	H&L Shank No.	H&L Type
3/8	C-2123B-25	4
3/8	C-2123BA-25	4
1/2	C-2123B-25	4
5/8 & 1¼	C-1543B-27	1
1½ & 1¾	C-1543B-28	1
2 & Up	C-1544B-28, 30 or 34	1
	C-2504B-25	

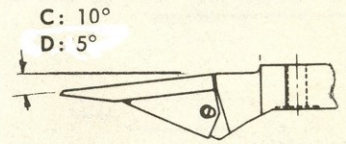
Shank Type No. 1
(5 Bolts)



Type A Shank
(Example: C-1111A)



Type B Shank
(Example: C-1111B)



Type C, D Shanks
(Examples: C-1111D)
C-1111C

E, F & G: Hole Size

Type F Shank: One Piece—No Replaceable Point

H&L Number	A	B	C	D	E	F	G
C-278F	3½	4	5¾	2½	1¼	1¼	1¾
C-356F	2½	4	4¾	2½	7/8	7/8	7/8
C-387F	2	4	4¾	2½	1	1	¾
C-913F	¾	2¼	2¾	2½	5/8	5/8	5/8
C-933A, B	1¼	2¾	2¾	2¾	1¼	1¼	1¼
C-933C, D	1¼	2¾	2¾	2¾	1¼	1¼	1¼
C-933BA	1¼	2¾	2¾	2¾	1¾	1¾	1¾
C-968F	3	2½	5½	3¾	1½	1½	1½
C-968A, B	3	2½	5½	3¾	1½	1½	1½
C-968C, D	3	2½	5½	3¾	1½	1½	1½
C-968BA	3	2½	5½	3¾	1¼	1¼	1¼
C-968DB	3	2½	5½	3¾	1¾	1¾	1¾
C-968DC	3	2½	5½	3¾	1½	1½	1½
C-979F	2¼	4	2¼	3	1½	1½	1½
C-979A, B, D	2¼	4	2¼	3	1½	1½	1½
C-979BA	2¼	4	2¼	3	1¼	1¼	1¼
C-1003F	1½	3	3¾	3	1¼	1¼	1¼
C-1021F	2½	3½	1¾	3	1¾	1¾	1¾
C-1035A, B, D	1½	4	4¾	2½	1¾	1¾	7/8
C-1035B-28	2	4	4¾	2½	1¼	1¼	7/8
C-1035BA	1½	4	4¾	2½	1¼	1¼	1¾
C-1035FF	1½	4	4¾	2½	1¾	1¾	1¾
C-1045A	1¼	3½	6	3½	1½	1½	1½
C-1045B, D	1¼	3½	6	3½	1½	1½	1½
C-1046-25	2½	3	3¾	3	1¾	1¾	1¾
C-1046-27	2½	3	3¾	3	1½	1½	1½
C-1046B	3	3	3¾	3	1½	1½	1½
C-1046BA	3	3	3¾	3	1¼	1¼	1¼
C-1046BB	3	3	3¾	3	1¾	1¾	1¾
C-1046F	2½	3	3¾	3	1½	1½	1½

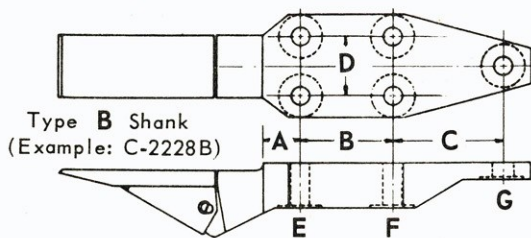
H&L Number	A	B	C	D	E	F	G
C-1066A	2½	3½	1¾	3	1½	1½	1½
C-1066B	2	3½	1¾	3	1½	1½	1½
C-1066BA-25	2	3½	1¾	3	1½	1¾	1¾
C-1066BA-27	2	3½	1¾	3	1½	1¾	1¾
C-1066BB	2	3½	1¾	3	1¼	1¼	1¼
C-1067A	2½	4	4¾	2½	1¾	1¾	1¾
C-1097A	1½	3½	5¾	2½	1¾	1¾	1¾
C-1111A, B, C, D	2	4	4¾	2½	1¼	1¼	7/8
C-1111F, H	2	4	4¾	2½	1¼	1¼	7/8
C-1111G	2	4	4¾	2½	1¾	1¾	7/8
C-1111AD	2	4	4¾	2½	1¼	1¼	7/8
C-1111BA	2	4	4¾	2½	1¾	1¾	7/8
C-1111DA	2	4	4¾	2½	1¾	1¾	1¾
C-1115A	1¼	3½	5	3½	1½	1½	1½
C-1116B	2	5½	4	3½	1¼	1¼	1¼
C-1119A	2	4	4¾	3¾	1¼	1¼	1¼
C-1122A	2	2	2	2¼	1¾	1¾	1¾
C-1122B	2	2	2	2¼	1¾	1¾	1¾
C-1125A	2¾	4	5	2½	1¼	1¼	1¾
C-1128A	3	4½	6	2¼	1¼	1¼	1¼
C-1156F	1¾	2	2½	2¼	1¾	1¾	1¾
C-1193B	1½	2½	2½	2½	1½	1½	1½
C-1196B, D	2	4¾	4¼	3½	1½	1½	1½
C-1196BA	2	4¾	4¼	3½	1½	1½	1½
C-1196DA	2	4¾	4¼	3½	1½	1½	1½
C-1197B	2¼	2¾	3	3¾	1½	1½	1½
C-1281B	2	3½	2¾	2¼	1½	1½	1½
C-1298B	2	3¼	1¾	2½	1½	1½	1½
C-1335B	1½	4	6½	2½	1½	1½	1½
C-1360B	3¼	3½	4¾	3½	1¾	1¾	1¾
C-1371B	2½	4	—	2½	1¼	1¼	—

CLAMSHELL

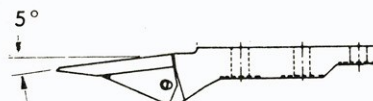
Shank Type No. 1 – (5 Bolts) cont'd.



Type A Shank
(Example: C-1377A)



Type B Shank
(Example: C-2228B)



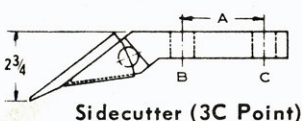
Type D Shank
(Example: C-2271D)

H&L Number	A	B	C	D	E	F	G
C-1373B	2	3	4 ⁷ / ₈	2 ⁵ / ₈	1 ¹ / ₈	1 ¹ / ₈	1 ¹ / ₈
C-1374B	2 ¹ / ₂	3 ³ / ₈	1 ³ / ₄	3	1 ³ / ₁₆	1 ³ / ₁₆	1 ³ / ₁₆
C-1377A,B,D	2	3	3 ³ / ₄	3	1 ¹ / ₁₆	1 ⁵ / ₁₆	1 ⁵ / ₁₆
C-1377AA,BB	2	3	3 ³ / ₄	3	1 ⁵ / ₁₆	1 ⁵ / ₁₆	1 ⁵ / ₁₆
C-1377BC	2	3	3 ³ / ₄	3	1 ⁵ / ₁₆	1 ³ / ₁₆	1 ³ / ₁₆
C-1392B,D	2 ¹ / ₂	3 ¹ / ₂	4 ³ / ₄	3 ¹ / ₂	1 ⁵ / ₁₆	1 ⁵ / ₁₆	1 ⁵ / ₁₆
C-1392E,F	2 ¹ / ₂	3 ¹ / ₂	4 ³ / ₄	3 ¹ / ₂	1 ⁵ / ₁₆	1 ⁵ / ₁₆	1 ⁵ / ₁₆
C-1416B	5 ¹ / ₄	4	4 ⁷ / ₈	2 ⁵ / ₈	1 ³ / ₁₆	1 ³ / ₁₆	1 ³ / ₁₆
C-1419B	1 ¹ / ₂	3 ¹ / ₂	2 ¹ / ₂	3 ¹ / ₂	1 ¹ / ₁₆	1 ¹ / ₁₆	1 ⁵ / ₁₆
C-1426B	4	3 ¹ / ₂	4 ⁷ / ₈	3 ¹ / ₂	1 ⁵ / ₁₆	1 ¹ / ₁₆	1 ¹ / ₁₆
C-1469B	2	2 ¹ / ₂	3	3	1 ³ / ₁₆	1 ³ / ₁₆	1 ³ / ₁₆
C-1419B	1 ¹ / ₂	3 ¹ / ₂	2 ¹ / ₂	3 ¹ / ₂	1 ¹ / ₁₆	1 ¹ / ₁₆	1 ⁵ / ₁₆
C-1491B	3	3 ¹ / ₂	5	3 ¹ / ₂	1 ¹ / ₁₆	1 ³ / ₁₆	1 ³ / ₁₆
C-1491C	3	3 ¹ / ₂	5	3 ¹ / ₂	1 ¹ / ₁₆	1 ⁷ / ₁₆	1 ⁷ / ₁₆
C-1491BA	3	3 ¹ / ₂	5	3 ¹ / ₂	1 ³ / ₁₆	1 ³ / ₁₆	1 ³ / ₁₆
C-1492B	2	5	4	4 ¹ / ₂	1 ¹ / ₁₆	1 ¹ / ₁₆	1 ¹ / ₁₆
C-1509B	2	3 ¹ / ₄	2 ³ / ₄	2 ¹ / ₄	1 ³ / ₁₆	1 ³ / ₁₆	1 ³ / ₁₆
C-1531B	2 ³ / ₄	4	—	2 ³ / ₄	1 ⁵ / ₁₆	1 ⁵ / ₁₆	—
C-1543BA	2 ¹ / ₂	2 ³ / ₄	3	2 ¹ / ₂	1 ¹ / ₁₆	1 ¹ / ₁₆	1 ¹ / ₁₆
C-1544B	3	—	—	3 ³ / ₄	1 ³ / ₁₆	1 ³ / ₁₆	1 ³ / ₁₆
C-1591B	3 ¹ / ₄	3 ¹ / ₂	6	4	1 ⁵ / ₁₆	1 ⁵ / ₁₆	1 ⁵ / ₁₆
C-1667D	4 ¹ / ₈	4	4 ⁷ / ₈	2 ⁵ / ₈	1 ³ / ₁₆	1 ³ / ₁₆	1 ³ / ₁₆
C-1681B	4 ³ / ₄	3 ³ / ₈	6	4	1 ⁵ / ₁₆	1 ⁵ / ₁₆	1 ⁵ / ₁₆

H&L Number	A	B	C	D	E	F	G
C-1693B	2 ³ / ₄	4	4 ⁷ / ₈	3 ¹ / ₄	1 ³ / ₁₆	1 ³ / ₁₆	1 ³ / ₁₆
C-1694B	3	2 ¹ / ₂	2 ¹ / ₄	3	1 ³ / ₁₆	1 ³ / ₁₆	1 ¹ / ₁₆
C-1712B	2	3 ¹ / ₂	6	4	1 ⁵ / ₁₆	1 ⁵ / ₁₆	1 ⁵ / ₁₆
C-1713B	2	4 ³ / ₄	4 ¹ / ₄	3	1 ³ / ₁₆	1 ³ / ₁₆	1 ³ / ₁₆
C-1715B	3	3	2 ³ / ₄	3	1 ¹ / ₁₆	1 ⁵ / ₁₆	1 ⁵ / ₁₆
C-1736B	4	3 ¹ / ₂	6	5 ¹ / ₄	1 ⁵ / ₁₆	1 ⁵ / ₁₆	1 ⁵ / ₁₆
C-1768B	2	3	3	2 ³ / ₄	1 ¹ / ₁₆	1 ¹ / ₁₆	1 ¹ / ₁₆
C-1785B	3 ³ / ₁₆	2 ³ / ₈	5 ¹ / ₄	2 ³ / ₈	1 ¹ / ₁₆	1 ¹ / ₁₆	1 ¹ / ₁₆
C-1794F	1 ³ / ₄	3 ¹ / ₂	5 ¹ / ₄	3 ¹ / ₂	1 ⁷ / ₁₆	1 ⁷ / ₁₆	1 ⁷ / ₁₆
C-1938B	2 ¹ / ₂	3 ⁷ / ₁₆	2 ¹ / ₂	3	1 ³ / ₁₆	1 ³ / ₁₆	1 ³ / ₁₆
C-2046B	2 ¹ / ₂	2 ³ / ₄	2 ³ / ₄	2 ³ / ₄	1 ¹ / ₁₆	1 ¹ / ₁₆	1 ¹ / ₁₆
C-2122B	2	3	2 ⁷ / ₁₆	3	1 ¹ / ₁₆	1 ¹ / ₁₆	1 ¹ / ₁₆
C-2152B	2	3	4	3	1 ³ / ₁₆	1 ³ / ₁₆	1 ³ / ₁₆
C-2159D	2	4	4 ¹ / ₂	2 ⁵ / ₈	1 ¹ / ₁₆	1 ¹ / ₁₆	7 ¹ / ₈
C-2228B	1 ¹ / ₄	3	4	3	1 ³ / ₁₆	1 ³ / ₁₆	1 ³ / ₁₆
C-2271D	5	4	5	3 ¹ / ₈	1 ³ / ₁₆	1 ³ / ₁₆	1 ³ / ₁₆
C-2330B	2	3	1 ¹ / ₂	3	1 ³ / ₁₆	1 ³ / ₁₆	1 ³ / ₁₆
C-2382B	2 ⁵ / ₈	5	4 ¹ / ₂	3 ¹ / ₈	1 ⁵ / ₁₆	1 ⁵ / ₁₆	1 ⁵ / ₁₆
C-2437D-33	2 ¹ / ₂	4	5	3 ¹ / ₈	1 ³ / ₁₆	1 ³ / ₁₆	1 ³ / ₁₆
C-2438D-33	4 ¹ / ₄	5	6	4 ¹ / ₂	1 ¹ / ₁₆	1 ¹ / ₁₆	1 ¹ / ₁₆

H&L Number	A	B	C
C-845-3C	3 ¹ / ₂	1 ³ / ₁₆	1 ³ / ₁₆
C-846-3C	3 ¹ / ₂	1 ¹ / ₁₆	1 ³ / ₁₆
C-847-3C	4	1 ³ / ₁₆	1 ³ / ₁₆
C-848-3C	5 ¹ / ₂	1 ⁵ / ₁₆	1 ⁵ / ₁₆
C-849-3C	3 ¹ / ₄	1 ³ / ₁₆	1 ³ / ₁₆
C-850-3C	3	1 ³ / ₁₆	1 ³ / ₁₆

Sidecutters

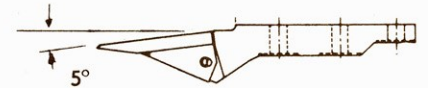
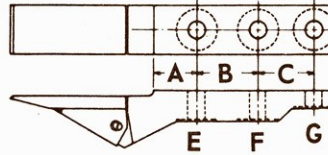
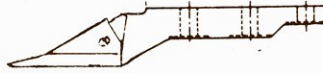


Sidecutter (3C Point)

H&L Number	A	B	C
C-851-3C	4 ¹ / ₄	1 ³ / ₁₆	1 ¹ / ₁₆
C-852-3C	3 ³ / ₄	1 ³ / ₁₆	1 ³ / ₁₆
C-854-3C	3 ⁵ / ₈	1 ¹ / ₁₆	1 ⁵ / ₁₆
C-854A-3C	3 ⁵ / ₈	1 ⁵ / ₁₆	1 ⁵ / ₁₆
C-855-3C	3 ¹ / ₄	1 ¹ / ₁₆	1 ¹ / ₁₆

Shank Type No. 2

(2 & 3 Bolts)



Type A Shank
(Example: C-1170A)

Type B Shank
(Example: C-1170B)

Type D Shank
(Example: C-1170D)

E, F & G: Bolt Hole Size

Type F Shank: One Piece - No Replaceable Point

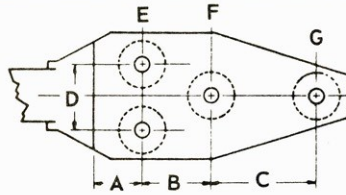
H&L Number	A	B	C	E	F	G
C-290F	1½	3½	3	1⅛	1⅛	1⅜
C-911A, B	2½	2¼	6½	15/16	15/16	15/16
C-911BA	2½	2¼	6½	1⅛	1⅛	1⅛
C-912D	1½	3½	3	1⅛	1⅛	1⅜
C-960A, F	2½	3½	3¼	1⅛	1⅛	1⅜
C-960B, D	2⅝	3½	3⅞	1⅛	1⅛	1⅜
C-960BA	2⅝	3½	3⅞	1⅛	1⅛	15/16
C-960FA	2⅝	3½	3⅞	1⅛	1⅛	1⅜
C-1070A	1½	3	3¾	13/16	13/16	13/16
C-1070F	1½	3	3¾	15/16	13/16	13/16
C-1086A, B	1¾	3	5½	1⅛	1⅛	1⅜
C-1107B	1⅝	3⅝	-	15/16	15/16	-
C-1126A, B,	1¾	2	3¼	13/16	13/16	13/16
C-1126BS	2	2¼	3¼	13/16	13/16	13/16
C-1143A, B	1½	3½	2¼	1⅛	1⅛	15/16
C-1165B	1½	3¼	-	13/16	13/16	-
C-1170A, B, D	2	3½	3	1⅛	1⅛	1⅜
C-1170F	2	3½	3	1⅛	1⅛	1⅜
C-1170BA	2	3½	3	15/16	15/16	15/16
C-1170BB, DB	2	3½	3	1⅛	1⅛	1⅛
C-1170FF	2	3½	3	1⅛	1⅛	1⅜
C-1178B	3	2¼	4⅝	15/16	15/16	15/16
C-1195B	2½	2	2⅝	13/16	13/16	13/16
C-1220B	1½	2½	3	13/16	13/16	13/16
C-1220BA	1½	2½	3	15/16	15/16	15/16
C-1225B-24	1⅝	2	2¾	13/16	13/16	13/16
C-1225B-25	1⅝	2	2	13/16	13/16	13/16
C-1274B-25	1⅜	2¼	4¼	13/16	13/16	13/16
C-1274B-27	1⅜	2¼	4¼	1⅛	1⅛	1⅛
C-1275B	1½	2½	8⅞	13/16	13/16	13/16

H&L Number	A	B	C	E	F	G
C-1341A	3	3½	3½	1⅛	1⅛	1⅛
C-1367B	2	3	5½	1⅛	1⅛	13/16
C-1379B, D	1⅛	3½	3¼	1⅛	1⅛	13/16
C-1381A, B	1⅝	2	3	13/16	13/16	13/16
C-1395B	2	3	3	1⅛	1⅛	1⅛
C-1397B	1⅝	1⅞	3¼	13/16	13/16	13/16
C-1406B	3	2½	4½	15/16	15/16	15/16
C-1419B	1½	3½	2½	1⅛	1⅛	15/16
C-1436B	1⅝	4½	-	13/16	13/16	-
C-1441B	2¾	4½	6	15/16	15/16	15/16
C-1455-24	1½	3	-	13/16	13/16	-
C-1473D-25	1½	3½	5	1⅛	1⅛	13/16
C-1500B	2	4½	6	1⅛	1⅛	1⅛
C-1553B	2	2½	3⅝	13/16	13/16	13/16
C-1593D	3½	3½	3	1⅛	13/16	13/16
C-1666B	3¼	3½	3	1⅛	1⅛	13/16
C-1666D	3¼	3½	3	1⅛	1⅛	13/16
C-1812B	1⅝	3½	-	15/16	15/16	-
C-1821B	2¼	3¼	-	13/16	13/16	-
C-1877B	1¾	4⅜	-	15/16	15/16	-
C-1935B	1¼	3½	-	13/16	13/16	-
C-2066D	2½	2½	2½	13/16	13/16	13/16
C-2116B	2	3½	-	15/16	15/16	-
C-2130BW	6½	10	-	3½	3⅜ ₃₂	(Weld-on)
C-2163F	2	6½	2½	1⅛	1⅛	1⅛
C-2368D	2	4¼	6½	1⅛	1⅛	1⅛
C-2369D	2	6½	6	1⅛	1⅛	1⅛

CLAMSHELL

Shank Type No. 3

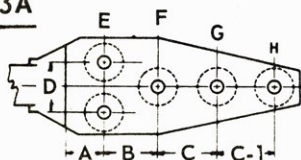
(4 Bolts)



H&L Number	A	B	C	D	E	F	G
C-1022	1 3/4	2 3/8	3 5/8	2 3/8	1 1/16	1 1/16	1 1/16
C-1076	3	2	4 1/2	2	1 1/16	1 1/16	1 1/16
C-1106A	2 3/4	2 1/4	4 3/8	2 1/4	1 1/8	1 1/8	1 1/8
C-1106B	2 3/4	2 1/4	4 3/8	2 1/4	1 1/16	1 1/16	1 1/16
C-1106AD	2 3/4	2 1/4	3 1/2	2 1/4	1 1/16	1 1/16	1 1/16
C-1127A	2 1/2	2 3/16	3 1/2	2 1/2	15/16	15/16	15/16
C-1130A	2 3/4	2 1/4	3 1/2	2 1/4	7/8	7/8	7/8
C-1130B	2 3/4	2 1/4	3 1/2	2 1/4	15/16	15/16	15/16
C-1177B	2 3/4	2 1/2	5	2 1/2	1 1/16	1 1/16	1 1/16
C-1211B	2 3/4	2 1/2	5	2 1/2	1 1/16	1 1/16	1 1/16
C-1214B	2 1/4	2 3/16	3 3/8	2 1/4	15/16	15/16	15/16
C-1223F	3	3	6 1/4	2 3/4	1 1/16	1 1/16	1 1/16
C-1235B,D	2	2 1/2	3	4 3/8	15/16	15/16	15/16
C-1276B	2	2	3	2	15/16	15/16	15/16
C-1320B	2 3/4	2 1/4	4 1/2	2 3/8	1 1/16	1 1/16	1 1/16
C-1320D	2 3/4	2 1/4	4 1/2	2 3/8	1 3/16	1 3/16	1 3/16
C-1320DA	2 3/4	2 1/4	4 1/2	2 3/8	1 3/16	1 3/16	1 3/16
C-1332B-	3	3	4	2 5/8	1 1/16	1 1/16	1 1/16
C-1332BA, BB	3 1/4	3	4	2 5/8	1 3/16	1 3/16	1 3/16
C-1371B	2 1/2	4	-	2 1/2	1 1/16	1 1/16	-
C-1394B	2 3/4	2 1/2	4	2 1/2	1 1/16	1 1/16	1 1/16
C-1472B	3 1/2	2 1/4	4 5/16	2 3/8	1 3/16	1 3/16	1 3/16
C-1479B	1 3/4	2 1/4	5 1/4	2 1/4	1 1/16	1 1/16	1 1/16
C-1525B	2 3/4	2 1/4	4	2 1/4	15/16	15/16	15/16
C-1531B	4	4	-	2 3/4	15/16	15/16	-
C-1571B	2 1/8	2 3/16	4 3/4	2 1/4	15/16	15/16	15/16
C-1595B	2	2 1/4	4 3/4	2 1/4	15/16	15/16	15/16
C-1652BA	4	2 3/4	7 3/8	3 1/2	1 1/16	1 1/16	1 3/16
C-1627B	5 1/8	5 1/8	8 5/16	3 1/2	1 1/16	1 1/16	1 1/16
C-1701B	2	2 1/4	4	2 1/4	15/16	15/16	15/16
C-1742B-28	3 1/4	3	3 3/8	2 5/8	1 3/16	1 3/16	1 3/16
C-1742B-30	3 1/4	3	4	2 5/8	1 3/16	1 3/16	1 3/16

Shank Type No. 3A

(5 Bolts)

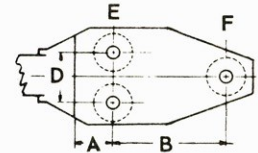


H&L Number	A	B	C	D	C-1	E	F	G	H
C-1506B-	4	3	6	2 3/4	4	1 3/16	1 3/16	1 3/16	1 1/16
C-1534B-34	5 17/32	5	4 3/4	3 1/2	5	1 1/16	1 1/16	1 1/16	1 3/16
C-1534D-34	5 1/8	5	4 1/2	3 1/2	5	1 1/16	1 1/16	1 1/16	1 3/16
C-1624B-	3 1/4	3	6 1/4	2 5/8	4	1 3/16	1 3/16	1 3/16	1 3/16
C-1624BA-	3 1/4	3	6 1/4	2 5/8	4	1 5/16	1 5/16	1 3/16	1 3/16

H&L Number	A	B	C	D	E	F	G
C-1743B	3 1/4	3	6 1/8	2 5/8	1 3/16	1 3/16	1 3/16
C-1744B	3 1/4	3	5 7/8	2 5/8	1 3/16	1 3/16	1 3/16
C-1745B	3 13/16	3	4 3/4	2 5/8	1 3/16	1 3/16	1 3/16
C-1746B	2 3/4	3	5 5/16	2 5/8	1 3/16	1 3/16	1 3/16
C-1747B	3 1/4	3	6 5/8	2 5/8	1 3/16	1 3/16	1 3/16
C-1748B	3 3/4	3	5	2 5/8	1 3/16	1 3/16	1 3/16
C-1749A	4 3/16	3 3/8	5 7/16	2 5/8	1 3/16	1 3/16	1 3/16
C-1751B	2 3/4	2 5/8	5 1/4	2 5/8	1 3/16	1 3/16	1 3/16
C-1760B	4 1/2	4	5	4	1 7/16	1 7/16	1 7/16
C-1834B	2 1/4	2 1/4	3 1/4	2 3/4	15/16	15/16	15/16
C-1976B	5 1/4	5 3/4	5 3/4	3 1/2	1 7/16	1 7/16	1 7/16
C-2260B	3 1/2	2 1/4	4 1/2	2 1/4	1 1/16	1 1/16	1 1/16
C-2323D	2 1/4	4	4 1/2	3 1/4	1 5/16	1 5/16	1 5/16
C-2469D-32	3 1/4	2 1/4	4 3/8	2 1/4	1 1/16	1 1/16	1 1/16

Shank Type No. 4

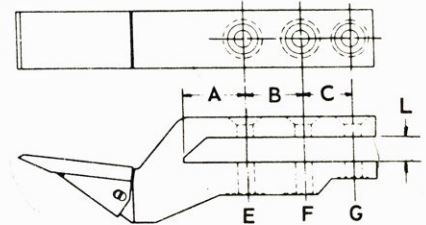
(3 Bolts)



H&L Number	A	B	D	E	F
C-814B	1 1/2	5	2 1/2	25/32	25/32
C-926F	3 3/4	7	2 5/8	1 3/16	1 3/16
C-1289B	1 1/2	4 3/4	2 5/8	1 1/8	1 1/8
C-1750B	3 1/4	6 3/8	2 5/8	1 3/16	1 3/16
C-1805B	2	4 3/4	2 1/2	15/16	15/16
C-2123B	1 3/4	4 1/4	3 3/8	15/16	15/16

Shank Type 5

(3 Bolts)



H&L Number	A	B	C	L	E	F	G
C-1238-	3 3/4	3 1/2	3	1 9/16	1 1/16	1 1/16	1 3/16
C-1238A-	3 3/4	3 1/2	3	1 13/16	1 1/16	1 1/16	1 3/16
C-1238B, C	3 3/4	3 1/2	3	2 1/16	1 1/16	1 1/16	1 3/16
C-1238D-	3 3/4	3 1/2	3	2 1/16	1 1/16	1 1/16	1 3/16
C-1336-	2 1/2	2	3 1/2	1 3/4	1 3/16	1 3/16	1 3/16
C-1980-	3	4 1/2	-	1 1/4	1 1/16	1 1/16	-
C-2457-37	2	3 1/2	3	2 1/16	1 1/16	1 1/16	1 3/16