

H&L Tooth Company
Quality **GET** since 1931

#210.2024 Catalog
A ISO 9001 CERTIFIED Company



www.hltooth.com



Ground Engaging Tools

Wear Parts for:

Caterpillar® Style Replacements

**Quality
GET since
1931**



**Cat®
Style
Pins and
Retainers**

**Cat®
Style
Ripping
Scarifiers**



**Cat® Forged
Replacement
One-Piece
Ripper Shanks for
D8, D9, D10
and D11**



**PATENTED
J-Series
Triple
Tiger®
Trident®**



**J-Series
Older
Style
Adapters
in Stock**

**J-Series
Forged RSP
Loader
Tips**



**Cat® Style
Single
Tiger**



**Cat®
Style
Bolt-on
Adapters**

**Replacement
Uni-Teeth**



**J-Series
Twin
Tiger**



**Cat®
Style
Weld-on
Adapters**



**Complete Line
of R-Series
Ripping
Teeth**



1-800-HL TOOTH

®Is a registered trademark of the respectively named Company.
All manufacturer's names, numbers, symbols and descriptions are used for reference purposes only.

Home of the H&L Tooth Company, Tulsa Oklahoma



200,000 square foot
manufacturing facility
for **QUALITY FORGED**
WEAR PARTS

1-800-HL TOOTH (1-800-458-6684) • Visit us at www.hltooth.com

©H&L Tooth Company 2024

product index

Page #

3-4

Replacements for J-Series J200, J250, J300, J350, J450, J550, J600, J700 and J800 **UNIFORGED®** digging teeth.

5-6

J-Series replacements for J200, J225, J250, J300 and J350 “**Cast-Value**” digging teeth. New **Triple Tiger®** Trident available.

7

Replacement for Cat® Style **Pin and Retainer Hardware** for ALL J-Series and R-Series digging and ripping teeth.

8-9

J-Series replacement **Weld-on and Bolt-on Adapters**. Adapters for J200, J225, J250, J300, J350, J450 and J460 with Cat model references.

10

Caterpillar® J-Series **Weld-on and Bolt-on Adapters**. Adapters for J550, J600 and J800 with Cat model references. Welding Instructions.

11

Cat® Style **Scarifier ripping Shanks**. Teeth for scarifiers using 6Y-5230, R300 and R350 series.

12

R-Series replacements for R450, R500 and R550 **UNIFORGED® Ripping Teeth**. A complete *LISTING* of available D11 and D10 **Rippers Shanks**.

13

A complete *LISTING* of available D 9 and D 8 **Rippers Shanks**. Replacement **Pins and Retainers** for ALL R-Series ripping teeth.

14

Ripper shank **Repair and Conversion Nosepieces** for D-8, D-9, D-10 ripping shanks.

15

Ripper shank **Repair and Conversion Nosepieces** for D-11 ripper shanks with Nosepiece to Ripper welding instructions.

16

Caterpillar® redesign of the 156 Series, **VRS-50** series Teeth, Adapters and Hardware as shown in Cat PSK, page 127.

17

Caterpillar® offered H&L® style **23-230** series Teeth, Adapters and Hardware “**HERE’S AN ORIGINAL TIP**” and **still manufactured in the USA!**

18

Replacement Uniteeth for Caterpillar® part numbers 132-4720 and 9W-1879.

19

Replacement Uniteeth for Caterpillar® part number 138-6410 and two-part adapter and tooth replacement L-3761-A-136.

20

Replacement Uniteeth for Caterpillar® part number 135-9390 and two-part adapter and tooth replacement L-3760-A-186.

21

Replacement Uniteeth for Caterpillar® part number 135-8203 and two-part adapter and tooth replacement L-3445-D-230.

22-23

Notes and Comments

®Is a registered trademark of the respectively named Company.

All manufacturer’s names, numbers, symbols and descriptions are used for reference purposes only.

Caterpillar® Style Tooth Products

FORGED in the USA, J-SERIES DIGGING TEETH



H&L Tooth began producing forged digging teeth in the early 1930's, original patents were issued to Partners Chester C. Hosmer and Ernie L. Launder.



The Forging process is the reshaping, resizing and continued reduction of grain flow of steel alloy metals under extreme pressures.

H&L® horizontal up-setters uniquely produce desired tooth configurations for all styles of Teeth use in ground engaging applications!

J-200 SERIES

HL-1U-3202

2.4#



Long Tip

J-250 SERIES

HL-1U-3251

7.5#



Short Tip

HL-1U-3252

8.0#



Long Tip

HL-4T-2253

8.5#



Abrasion Tip

HL-1U-3252TT

8.5#



Twin Tiger Tip

J-300 SERIES

HL-1U-3301

9.8#



Short Tip

HL-1U-3302

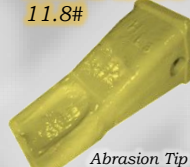
10.2#



Long Tip

HL-4T-2303

11.8#



Abrasion Tip

HL-1U-3302TT

11.2#



Twin Tiger Tip

J-350 SERIES

HL-1U-3351

14.3#



Short Tip

HL-1U-3352

15.2#



Long Tip

HL-4T-2353

15.8#



Abrasion Tip

HL-9W-2359

12.2#



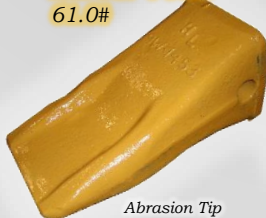
Single Tiger Claw Tip

J-450 SERIES

Used with J-450 and J460 Series Adapters

HL-9N-4453

61.0#



Abrasion Tip

HL-9W-1453

32.2#



Heavy Abrasion

HL-9N-4452RPS

42.5#



Rock Penetrating Star

1-800-HL TOOTH

®Is a registered trademark of the respectively named Company.

All manufacturer's names, numbers, symbols and descriptions are used for reference purposes only.

Caterpillar® Style Tooth Products

FORGED in the USA, J-SERIES DIGGING TEETH

J-550 SERIES

HL-9W-8552
38.0#



Long Tip

HL-9W-8552T
35.3#



Single Tiger Tip

HL-138-6558
36.0#



Twin Tiger Tip

HL-9N-4552RPS
66.5#



Rock Penetrating Star

HL-9W-1553
52.8#



Abrasion Tip

J-600 SERIES

HL-7Y-0602
112.0#



Heavy Duty Long Tip

HL-135-9608
78.0#



Twin Tiger Claw Tip

H&L® produces a wide variety of adapters, teeth and retention hardware for Loaders, Excavators and Backhoes.

At H&L's facility in Tulsa Oklahoma, forging tooth tips are done on horizontal machines known as Up-setters. Under the roof in Tulsa are two-4" up-setter lines that produce small backhoe teeth from under 3 pounds to 10 pounds; parts are shaped in 30-second cycles.

Two-6" up-setters produce teeth up to 30 pounds, but also allows the adaptation of the 4" up-setter tools that can result in a maximum one-shift daily production of 3500 plus pieces when fully operational. Ripper teeth are produced on a 7 1/2" up-setter creating teeth up to 100 pounds in size. Large mining teeth are produced on two 9" up-setters that produce parts in excess of two-hundred pounds in many styles. Each forge production line is also equipped with up to six additional supporting units, including induction heaters, vertical presses for part trimming, hole punching and coining operations.

Over two million GET Parts are housed in Tulsa, Oklahoma.

H&L® Tooth is an ISO 9001 CERTIFIED Company

J-700 SERIES

HL-4T-4703
136.0#



Heavy Abrasion Tip

J-800 SERIES

HL-6I-8802RPS
196.0#



Rock Penetrating Star

1-800-HL TOOTH

®Is a registered trademark of the respectively named Company.

All manufacturer's names, numbers, symbols and descriptions are used for reference purposes only.

Caterpillar® Style Tooth Products

VALUE-CAST J-SERIES DIGGING TEETH

J-200 SERIES



Patented

J-225 SERIES



Over two million GET Parts are housed in Tulsa, Oklahoma.

J-250 SERIES



H&L® Tooth is an ISO 9001 CERTIFIED Company



Patented

J-300 SERIES



Patented



H&L® has a extensive selection of **Forged** and **Cast** OEM J-Series style TEETH for all Applications!
Over two million GET Parts are housed in Tulsa, Oklahoma.

J-350 SERIES



Patented



Caterpillar® Style Tooth Products

VALUE-CAST J-SERIES DIGGING TEETH

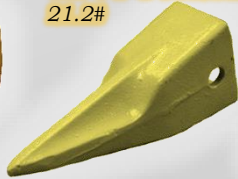
J-400 SERIES

CX-7T-3402
20.1#



Long Tip

CX-7T-3402TL
21.2#



Single Tiger Long

CX-7T-3402WTL
23.8#



Twin Tiger Long

CX-8E-4402
24.7#

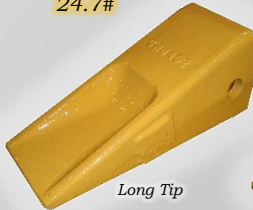


Heavy Duty Long

J-450 SERIES

Used with
J-450 and J460
Series
Adapters

CX-1U-3452
24.7#



Long Tip

CX-1U-3452TL
28.7#



Single Tiger Long

CX-1U-3452WTL
33.1#



Twin Tiger Long

CX-1U-3452TR3
30.0#



Triple Tiger® Trident®

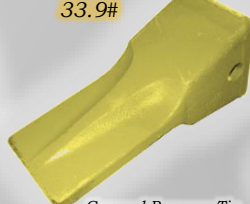
Patented

CX-9W-8452
26.0#



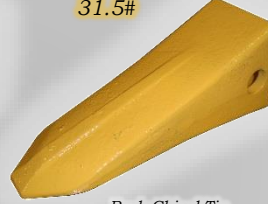
Heavy Duty Long

CX-9W-8452SYL
33.9#



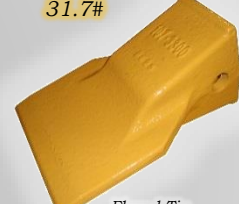
General Purpose Tip

CX-1U-3452RC
31.5#



Rock Chisel Tip

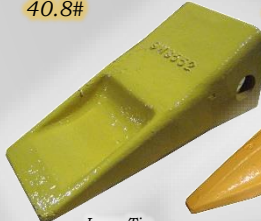
CX-107-3450
31.7#



Flared Tip

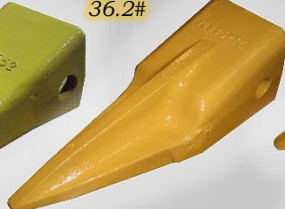
J-550 SERIES

CX-9W-8552
40.8#



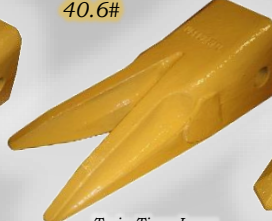
Long Tip

CX-1U-3552TL
36.2#



Single Tiger Long

CX-1U-3552WTL
40.6#



Twin Tiger Long

CX-9W-8552RC
51.8#



Rock Chisel Tip

CX-107-3550
59.1#



Flared Tip

J-600 SERIES

CX-6I-6602
71.4#



Long Tip

Over two million GET Parts are housed in Tulsa, Oklahoma.



Tulsa Shipping Department
Over Two Million "GET" Parts in Stock



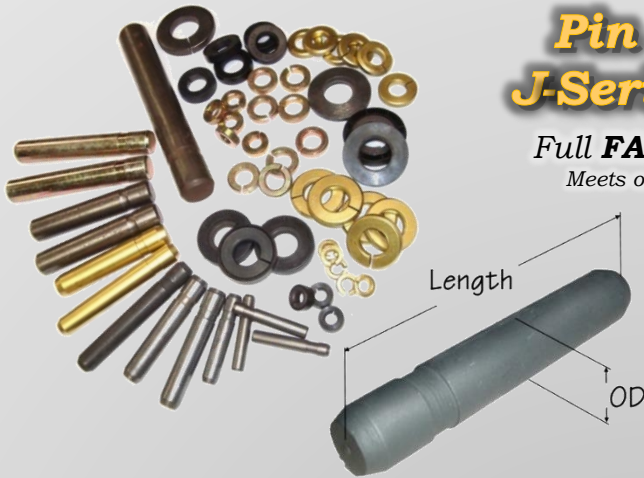
1-800-HL TOOTH
www.hltooth.com

Caterpillar® Style Pin and Retainer Hardware

©H&L Tooth Company 2024

Pin and Retainer Hardware for J-Series and R-Series Connections

Full **FACTORY WARRANTY** ON ALL H&L PRODUCTS.
Meets or exceeds OEM requirements, all dimensions are for reference only.



Steel Pin

Series	Part Number	OD	Length	Other Part Numbers
J-200	HL-9W-7112	0.433"	2.36"	8E-6208, 1U-4208
J-225	HL-6Y-3228	0.551"	2.64"	132-4762
J-250	HL-9J-2258P	0.551"	3.01"	8E-6258, 132-4763
J-300	HL-9J-2308P	0.551"	3.54"	107-3308, 132-4766
J-350	HL-8E-6358	0.748"	4.13"	9J-2358, 7J-6846, 114-0358
J-400	HL-7T-3408	0.866"	4.61"	116-7408, 8E-6408
J-450	HL-6Y-2527	0.748"	5.24"	4T-1458, 1U-1458
J-460	HL-8E-0468	0.945"	5.24"	114-0468
J-550	HL-6Y-8558	0.984"	6.31"	9W-9026, 9J-4558, 107-3378
J-600	HL-113-9608	1.181"	7.56"	6I-6608, 6I-9608
J-700	HL-9U-9616	1.261"	7.68"	113-4708
J-800	HL-134-1808	1.370"	9.30"	102-0101

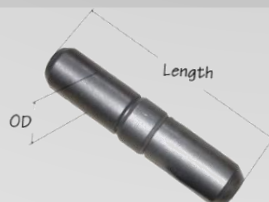
Retainer

Series	Part Number	ID	OD	Other Part Numbers
J-200	HL-4T-0001	0.417"	0.91"	8E-6209
J-225	HL-8E-6259	0.535"	1.18"	3G-9609, 149-5733
J-250	HL-8E-6259	0.535"	1.18"	3G-9609, 149-5733
J-300	HL-8E-6259	0.535"	1.18"	3G-9609, 149-5733
J-350	HL-8E-6359	0.728"	1.58"	3G-9549, 7J-6845, 114-0359
J-400	HL-7T-3409	0.846"	1.65"	116-7409, 8E-8409
J-450	HL-8E-6359	0.728"	1.73"	3G-9549, 7J-6845
J-460	HL-8E-8469	0.917"	1.73"	107-3469
J-550	HL-8E-5559	0.964"	2.09"	3G-9559, 7J-9559, 107-8559
J-600	HL-113-9609	1.142"	2.28"	6I-6609, 6I-9609
J-700	HL-4T-4707	1.220"	2.52"	113-4709
J-800	HL-134-1809	1.340"	2.78"	101-2874

Series	Part Number	OD	Length	Other Part Numbers
R-200	HL-9W-7112	0.433"	2.36"	8E-6208, 1U-4208
R-250	HL-9J-2258P	0.551"	3.01"	132-4763
R-300	HL-9W-2678	0.750"	3.38"	136-8308, 9J-2358, 9W-2668
R-350	HL-8E-6358	0.748"	4.13"	9W-2678, 114-0358
R-450	HL-6Y-3394	0.995"	5.00"	6Y-3394 (Bucket Type) 138-6450 (HD)
R-500	HL-6Y-1204	1.260"	5.60"	6Y-3909 (Bucket Type) 6Y-1204 (Impact) 138-6508 (HD)
R-550	HL-9N-4245	1.375"	6.25"	8E-2229 (Bucket Type) 9N-4245 (Impact) 159-0558 (HD)

Series	Part Number	ID	OD	Other Part Numbers
R-200	HL-4T-0001	0.417"	0.91"	8E-6209
R-250	HL-3G-9609	0.535"	1.18"	133-0609
R-300	HL-1U-2405	0.720"	1.50"	114-0359, 7J-6845
R-350	HL-1U-2405	0.720"	1.50"	114-0359, 7J-6845
R-450	HL-8E-4743	0.970"	1.88"	8E-4743 (Bucket Type) 107-8559 (HD)
R-500	HL-6Y-1202	1.240"	2.50"	4T-4707 (Bucket Type) 6Y-1202 (Impact) 113-4709 (HD)
R-550	HL-6Y-1205	1.380"	2.75"	8E-2230 (Bucket Type) 6Y-1205 (Impact) 134-1809 (HD)

Compression Ring Hardware for R-Series Caterpillar® Ripper Shanks



Series	Part Number	OD	Length	Other Part Numbers
R-450	HL-4T-2479	1.000"	4.69"	7J-9600
R-500	HL-3G-0500	1.250"	6.00"	102-9062
R-550				6Y-2443

®Is a registered trademark of the respectively named Company.
All manufacturer's names, numbers, symbols and descriptions are used for reference purposes only.

J-Series Weld-on & Bolt-on Adapter Products

©H&L Tooth Company 2024

J-200 SERIES

HL-119-3204

1.00" Lip
3.5#



Selected Models
416, 426, 428,
436, 438, 446

HL-119-3205

0.75" Lip
3.5#



Selected Models
303, 303.5, 304.5,
304C, 305C

HL-4T-1204

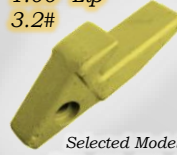
1.00" Lip
4.7#



Selected Models
IT18, 416, 426,
428, 910, 931, 935

HL-8J-7525

1.00" Lip
3.2#



Selected Models
IT12, 416, 426, 428,
910, 931, 935

HL-9J-4207

1.50" Lip
51.0#



Selected Models
IT12, IT14, IT24, IT26,
IT28, 910, 931, 933, 935

J-225 SERIES

HL-6Y-3224

.85" Lip
6.6#



Selected Models
306, 307, 308,
311, 312, 446

H&L® produces a wide variety of adapters, teeth and retention hardware for most Cat® Loaders, Excavators and Backhoes.

**Over two million GET Parts are housed in Tulsa, Oklahoma.
H&L® Tooth is an ISO 9001 CERTIFIED Company**

J-250 SERIES

HL-1U-0257

1.00" Lip
19.1#



Selected Models
IT18, 916, 920, 926,
930, 936, 941, 943,
951, 953

HL-1U-1254

1.50" Lip
16.2#



Selected Models
IT18, 916, 920, 926,
930, 936, 941, 943,
951, 953

HL-3G-0169

1.00" Lip
13.0#



Selected Models
IT18, 916, 920, 926,
930, 936, 941, 943,
951, 953

HL-6Y-3254

1.25" Lip
9.0#



Selected Models
Excavator/Backhoe
Base edge



J-300 SERIES

HL-1U-0307

1.00" Lip
24.6#



Selected Models
936, 950, 955B,
944, 955,

HL-1U-1304

1.12" Lip
17.7#



Selected Models
235, 936, 950, 955,
963, 966C, 953, 944,

HL-3G-5307

1.25" Lip
34.5#



Selected Models
966, 966C

HL-3G-6304

1.25" Lip
20.0#



Selected Model
215

HL-4T-4307

1.38" Lip
28.0#



Selected Models
950B, 955, 955L, 963,

HL-9J-2307

1.25" Lip
29.5#



Selected Models
615, 623, J619, J621

HL-9J-8929

1.12" Lip
18.6#



Selected Models
244, 936, 944, 950,
955, 963, 996C

HL-9W-1304

1.25" Lip
13.2#



Selected Models
215, 219, E180, E200,
EL200, 224, B-Family



H&L® Cat® style adapters are manufactured from Chrom-Moly-Nickel QUALITY steel that matches or exceeds OEM requirements!

1-800-HL TOOTH

® is a registered trademark of the respectively named Company.

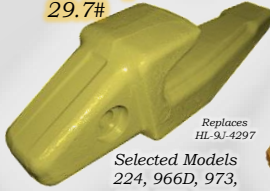
All manufacturer's names, numbers, symbols and descriptions are used for reference purposes only.

J-Series Weld-on & Bolt-on Adapter Products

©H&L Tooth Company 2024

J-350 SERIES

HL-1U-1350
1.25" Lip
29.7#



Replaces HL-9J-4297
Selected Models
224, 966D, 973,
977, 980, 980C

HL-1U-1354
1.25"-1.75" Lip
33.0#



Replaces HL-9J-4354
Selected Models
245, 966D, 973,
977, 980, 980C

HL-1U-1357
1.75" Lip
42.0#



Selected Models
980, 980C

HL-3G-1357
1.34" Lip
38.5#



Replaces HL-9J-2357
Selected Models
966, 966C, 973,
977

HL-3G-2357
1.88" Lip
51.0#



Replaces HL-8J-5357
Selected Models
977, 977L, 977K,
980, 980B, 980C

HL-3G-3357
1.62" Lip
41.0#



Selected Models
966, 966D, 970F,
973, 977

HL-3G-7357
1.25" Lip
47.0#



Selected Model
966C

HL-3G-8354
1.50" Lip
20.0#



Replaces HL-8J-4310
Selected Model
225

HL-9J-2357
1.25" Lip
40.0#



Replaces HL-3G-1357
Selected Models
977, 977L, 977K

J-400 SERIES

HL-6I-6404
1.75" Lip
28.7#



Selected Models
225, 229, 231, 235, E300,
C-Family, D-Family, S-Family

Over two million
GET Parts are
housed in Tulsa,
Oklahoma.

H&L® Tooth is an
ISO 9001
CERTIFIED Company



J-450 SERIES

HL-1U-1454
2.00" Lip
48.0#



Replaces HL-8J-1454
Selected Models
235, 983, 988

HL-4T-7454
2.00" Lip
50.0#



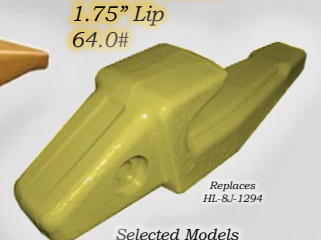
Selected Models
235, 988

HL-7T-8454
2.00" Lip
50.0#



Replaces HL-9J-9584
Selected Models
966D, 973, 977,
980, 983, 988

HL-9J-3667
1.75" Lip
64.0#



Replaces HL-8J-1294
Selected Models
224, 983, 988,
988B

J-460 SERIES

HL-114-0464
2.00" Lip
47.0#



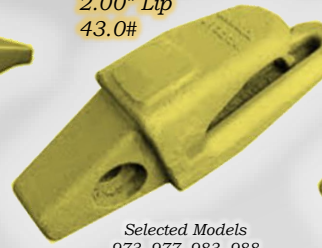
Selected Models
988, 988B, 988F, 988G, 988H

HL-8E-0464
2.00" Lip
46.0#



Selected Models
973, 980, 983, 988

HL-8E-3464
2.00" Lip
43.0#



Selected Models
973, 977, 983, 988

HL-8E-6464
2.00" Lip
43.0#



Selected Models
973, 977, 983, 988

1-800-HL TOOTH

®Is a registered trademark of the respectively named Company.
All manufacturer's names, numbers, symbols and descriptions are used for reference purposes only.

J-Series Weld-on Adapter Products

©H&L Tooth Company 2024

J-550 SERIES

HL-3G-4554
2.50" Lip
78.0#



Replaces
HL-8J1454
HL-9J-9384

Selected Models
992, 992B, 992C

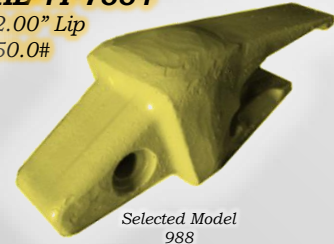
HL-3G-9494
2.50" Lip
92.0#



Replaces
HL-9J-6181

Selected Models
245, 983B, 992, 992B, 992C

HL-4T-7554
2.00" Lip
50.0#



Selected Model
988

HL-6I-6554
2.38" Lip
77.2#



Replaces
HL-1U-1553
HL-9J-0174

Selected Models
235, 245, DB-Family, E-Family,
F-Family, G-Family, H-Family
TB-Family, UB-Family, V-Family

HL-7J-9554
2.00" Lip
78.0#



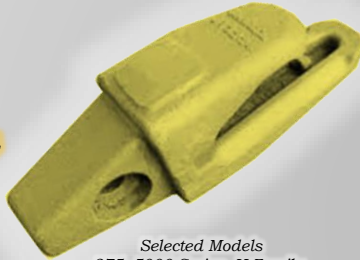
Selected Model
992, 992B

**Over two million GET
Parts are housed in Tulsa,
Oklahoma.**

**H&L® Tooth is an ISO
9001 CERTIFIED Company**

J-600 SERIES

HL-6I-6604
3.00" Lip
116.8#



Selected Models
275, 5000-Series, H-Family,
HB-Family, J-Family,
W-Family, WB-Family

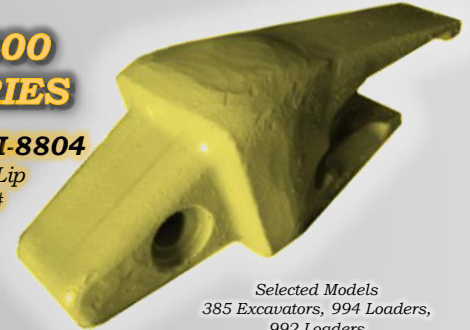
J-700 SERIES

**NONE AVAILABLE
AT THIS TIME...
We have the Teeth!**

Selected Models
5000-Series, 994 Loaders, 992
Loaders, 990 Loaders, J-Family,
JB-Family, WB2-Family

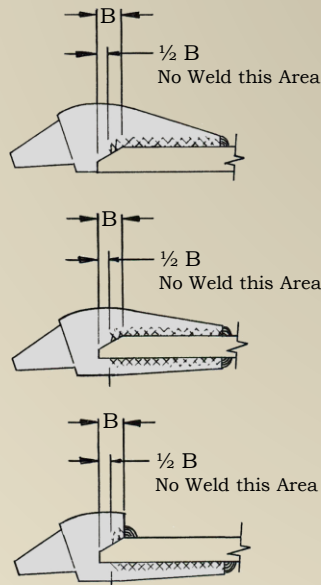
J-800 SERIES

HL-6I-8804
4.00" Lip
265.0#



Selected Models
385 Excavators, 994 Loaders,
992 Loaders

Typical Adapter Welding Instructions



H&L® adapters may be attached to products of various material compositions and heat treatments. This information is considered as general in nature, it is recommended that a welding engineer be contacted.

1. Thoroughly clean oil, paint, dirt or rust from the weld areas. Before preheating, allow adapters to be stored at room (70°F) temperature for a minimum of eight hours. Preheat the adapter and adjacent lip material to 400°F.
2. Use 3/16" diameter, type 7018 low hydrogen welding rods. It is recommended that weld be stored in a dry place, possibly baked prior to use in accordance with suppliers instruction to prevent excessive moisture.
3. Start welds at the rear of the adapter and proceed towards the lip blunt and angle of the cutting edge, using multi-pass technique, placing weld beads alternately on each side of the adapter forming a fillet weld.
4. Stop weld bead 1" from the blunt and angle of the cutting edge to prevent excessive stress concentration between adapter and lip. REMOVE any slag build up after each pass of the weld rod.
5. Complete fillet welds such that the horizontal and vertical are approximately .75".
6. Allow all welds to slow cool to room temperatures, 70°F and above.

1-800-HL TOOTH

® is a registered trademark of the respectively named Company.

All manufacturer's names, numbers, symbols and descriptions are used for reference purposes only.

Caterpillar® Style Scarifiers & Small Rippers

©H&L Tooth Company 2024

H&L produces a wide variety of SCARIFIERS for Caterpillar and Other equipment.

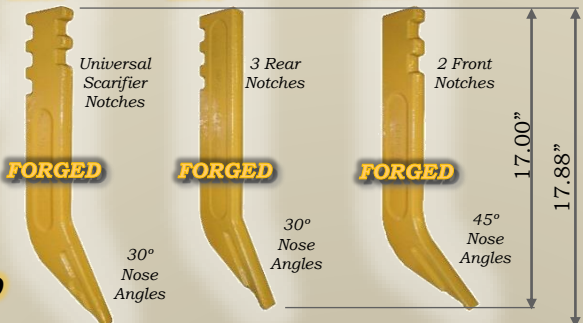
Heavy Duty FORGED
HL-6Y-5230
3.3#



Replaces
2D-5572
HP-55

Medium Duty Value-Cast CX-6Y-5230
3.1#

HL-5-0940 12.0# **HL-5B-0947** 12.4# **HL-8110** 13.0#



FORGED

FORGED

FORGED

Universal
Scarifier
Notches

3 Rear
Notches

2 Front
Notches

30°
Nose
Angles

30°
Nose
Angles

45°
Nose
Angles

Selected Models

#12, #12G, #14, #112, #120, 12DG, 130G, 140G, #212 and Others

R-200
SERIES

HL-8J-5299
15.3#

UNFORGED®
HL-1U-3202
2.4#



Selected Models
No. 3, 931, 933, 939,
D4C, 135H, 120H, D5C



R-250
SERIES

UNFORGED®
HL-1U-3252
8.0#



HL-1U-1257
44.0#



Selected Models
943, 953, D3G,
D4G, D5G

R-300
SERIES

UNFORGED®
HL-6Y-0309ST
12.8#
Star Rib
Design



Replaces
6Y-0309
9J-8910

HL-9J-8913
70.0#



Selected Models
No. 12 & 14, 130,
140, 143H, 16H, 163

HL-9J-6586
63.0#



Selected Models
No. 4, 941, 951,
955, 963

R-350
SERIES

UNFORGED®
HL-6Y-0359ST
26.0#
Star Rib
Design



Replaces
6Y-0359
9J-8920

HL-9J-8923
122.0#



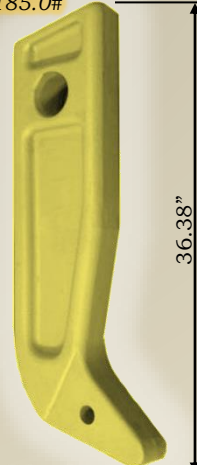
Selected Models
No. 5 & 6, 973, 977,
16, 24H, D6M, D6N

HL-9J-3139
145.0#



Selected Models
No. 5 & 6, 973, 977,
16, 24H, D6M, D6N

HL-7J-6671
185.0#



Selected Models
983

HL-9J-1642
300.0#



Selected Models
No. 7, D7, D7R

Over two million GET Parts are housed in Tulsa, Oklahoma.
H&L® Tooth is an ISO 9001 CERTIFIED Company

®Is a registered trademark of the respectively named Company.
All manufacturer's names, numbers, symbols and descriptions are used for reference purposes only.

Caterpillar® Style Ripper Products

©H&L Tooth Company 2024

“Always use the longest tip that will rip without excessive breakage.”

quote Caterpillar's Handbook of Ripping 2/2000

Unforged® in Tulsa, Oklahoma USA

R-450 FORGED SERIES

HL-9W-2451

33.0#
Short
Centerline



HL-9W-2452ST

40.0#
Star Rib
Design



Replaces
9W-2452

HL-4T-4453

43.0#
Long
Centerline



Replaces
114-0453

R-500 FORGED SERIES

HL-4T-4502ST

65.0#
Star Rib
Design



Replaces
4T-4502

HL-4T-4503

66.0#
Long
Centerline



Replaces
8E-8503

R-550 SERIES

CX-6Y-3552

95.5#
Intermediate
Penetrator



D11 and D10 Ripper Shanks

♦One piece ripper shank.

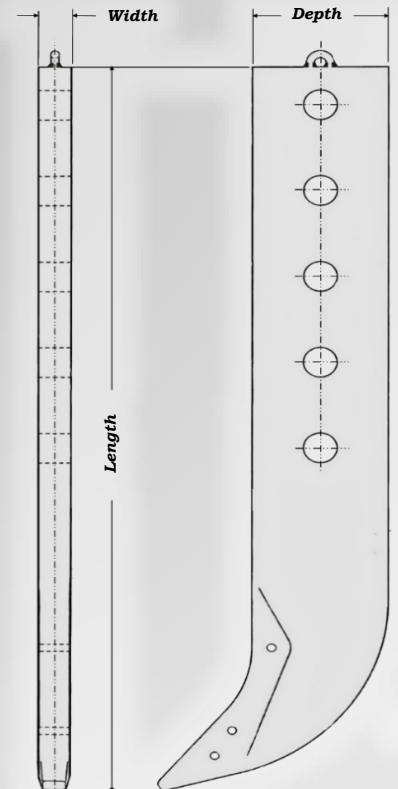
Model	Part Number	Weight*	Width	Depth	Length	Holes	Series
D11 ♦DR	HL-104-9275♦	2630.0#	4.33"	17.75"	129.62"	3	R-550
D11 ♦SS	HL-104-9277♦	2180.0#	4.33"	17.75"	107.50"	4	R-550
D11, D10 ♦MS	HL-3G-6507	1360.0#	3.94"	15.75"	81.31"	2	R-500
D11, D10 ♦MS	HL-6Y-5616♦	1310.0#	3.94"	15.75"	77.85"	2	R-500
D11 ♦SS	HL-8E-0467	2180.0#	4.33"	17.75"	107.50"	4	R-550
D11, D10 ♦MS	HL-8E-8413♦	1310.0#	3.94"	15.75"	77.85"	2	R-500
D10 ♦SS	HL-118-2140	1650.0#	3.94"	15.75"	98.80"	3	R-500
D10 ♦SS	HL-1U-4592	1850.0#	3.94"	15.75"	110.62"	4	R-500
D10, D 9 ♦SS	HL-3G-2088	1240.0#	3.50"	14.00"	91.65"	3	R-500
D10, D11 ♦MS	HL-3G-6507	1360.0#	3.94"	15.75"	81.31"	2	R-500
D10 ♦SS	HL-6Y-4679♦	1850.0#	3.94"	15.75"	110.62"	4	R-500
D10, D11 ♦MS	HL-6Y-5616♦	1310.0#	3.94"	15.75"	77.85"	2	R-500
D10, D 9 ♦SS	HL-6Y-6138	1240.0#	3.50"	14.00"	91.65"	3	R-500
D10, D 9 ♦MS	HL-6Y-6141	960.0#	3.50"	14.00"	71.75"	2	R-500
D10 ♦DR	HL-6Y-6144	1450.0#	3.50"	14.00"	111.20"	3	R-500
D10 ♦DR	HL-6Y-6147	1580.0#	3.50"	15.00"	111.20"	3	R-500
D10 ♦MS	HL-7T-5131♦	1310.0#	3.94"	15.75"	77.85"	2	R-500
D10 ♦SS	HL-8E-8411♦	1400.0#	3.50"	15.00"	98.80"	3	R-500
D10 ♦MS	HL-8E-8413♦	1310.0#	3.94"	15.75"	77.85"	2	R-500
D10, D 9 ♦SS	HL-8E-8414	1235.0#	3.50"	14.00"	91.50"	3	R-500
D10, D 9 ♦MS	HL-8E-8415♦	960.0#	3.50"	14.00"	71.75"	2	R-500
D10 ♦DR	HL-8E-8417♦	1670.0#	3.50"	15.00"	118.00"	3	R-500
D10 ♦MS	HL-9J-5954	958.0#	3.50"	14.00"	71.00"	2	R-500
D10 ♦SS	HL-9W-4426	1240.0#	3.50"	14.00"	91.65"	3	R-500

♦SS = Single Shank
♦DR = Deep Ripping
♦MS = Multi Shank

*Weights are an estimation, actual ripper shanks may differ due to steel tolerancing.

“Tip selection is also affected by the abrasiveness of the material. Centerline ripper tips are designed for abrasive applications where increased wear life is a consideration.”

Quote Caterpillar® Handbook of Ripping



®Is a registered trademark of the respectively named Company.

All manufacturer's names, numbers, symbols and descriptions are used for reference purposes only.

Caterpillar® Style Ripper Products

D9 and D8 Ripper Shanks ♦One piece ripper shank.

Model	Part Number	Weight*	Width	Depth	Length	Holes	Series
D 9 ♦SS	HL-114-4503B	1235.0#	3.50"	14.00"	90.50"	3	R-500
D 9, D10 ♦SS	HL-3G-2088	1240.0#	3.50"	14.00"	91.65"	3	R-500
D 9 ♦DR	HL-3G-8566	1850.0#	3.94"	15.75"	110.65"	4	R-500
D 9, D 8 ♦DR	HL-4T-8988♦	1330.0#	3.00"	13.00"	108.50"	3	R-450
D 9, D 8 ♦SS	HL-4T-8990♦	770.0#	3.00"	13.00"	63.20"	2	R-450
D 9, D10 ♦SS	HL-6Y-6138	1240.0#	3.50"	14.00"	91.65"	3	5-500
D 9, D10 ♦MS	HL-6Y-6141	960.0#	3.50"	14.00"	71.75"	2	R-500
D 9 ♦DR	HL-7J-1793♦	1435.0#	3.50"	14.00"	106.30"	6	R-450
D 9 ♦MS	HL-7J-1794♦	750.0#	3.00"	13.00"	69.20"	2	R-450
D 9 ♦MS	HL-7J-1795♦	750.0#	3.00"	13.00"	62.20"	2	R-450
D 9 ♦SS	HL-8E-5339♦	1120.0#	3.00"	13.00"	91.80"	3	R-450
D 9, D 8 ♦MS	HL-8E-5346♦	770.0#	3.00"	13.00"	63.40"	2	R-450
D 9, D10 ♦SS	HL-8E-8414♦	1235.0#	3.50"	14.00"	91.50"	3	R-500
D 9, D10 ♦MS	HL-8E-8415♦	960.0#	3.50"	14.00"	71.75"	2	R-500
D 9 ♦SS	HL-9W-6167♦	1120.0#	3.00"	13.00"	91.65"	3	R-450
D 8 ♦DR	HL-4T-0134♦	1120.0#	3.00"	13.00"	96.60"	3	R-450
D 8 ♦SS	HL-4T-0135♦	900.0#	3.00"	13.00"	75.00"	3	R-450
D 8 ♦MS	HL-4T-0136♦	700.0#	3.00"	13.00"	59.50"	2	R-450
D 8 ♦DR	HL-8E-5340♦	1170.0#	3.00"	13.00"	96.60"	3	R-450
D 8, D 9 ♦DR	HL-4T-8988♦	1320.0#	3.00"	13.00"	108.50"	3	R-450
D 8 ♦SS	HL-4T-8989♦	950.0#	3.00"	13.00"	79.35"	3	R-450
D 8, D 9 ♦MS	HL-4T-8990♦	770.0#	3.00"	13.00"	63.20"	2	R-450
D 8, D 9 ♦MS	HL-8E-5346♦	770.0#	3.00"	13.00"	63.40"	2	R-450
D 8 ♦SS	HL-8E-5347♦	965.0#	3.00"	13.00"	79.35"	3	R-450

♦SS = Single Shank
♦DR = Deep Ripping
♦MS = Multi Shank

*Weights are an estimation, actual ripper shanks may differ due to steel tolerancing.

"There are many variable to ripping. Utilization of the proper operator techniques will increase production, maximize ripper tooth life, reduces track wear, and prevent tractor and ripper damage."

Quote Caterpillar® Handbook of Ripping

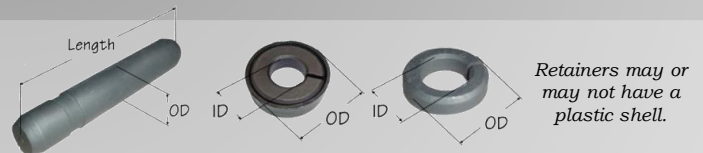


Cat Ripper Style Pins and Retainers

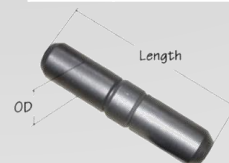
Full **FACTORY WARRANTY** ON ALL H&L PRODUCTS. Meets or exceeds OEM requirements All dimensions are for reference only.

Series	Part Number	OD	Length	Other Part Numbers
R-200	HL-9W-7112	0.433"	2.36"	8E-6208, 1U-4208
R-250	HL-9J-2258P	0.551"	3.01"	132-4763
R-300	HL-9W-2668	0.750"	3.38"	136-8308, 9J-2358, 2W-2668
R-350	HL-8E-6358	0.748"	4.13"	9W-2678, 114-0359
R-450	HL-6Y-3394	0.995"	5.00"	6Y-3394 (Bucket Type) 138-6450 (HD)
R-500	HL-6Y-1204	1.260"	5.60"	6Y-3909 (Bucket Type) 6Y-1204 (Impact) 138-6508 (HD)
R-550	HL-9N-4245	1.375"	6.25"	8E-2229 (Bucket Type) 9N-4245 (Impact) 159-0558 (HD)

Series	Part Number	OD	Length	Other Part Numbers
R-450	HL-4T-2479	1.000"	4.69"	7J-9600
R-450	HL-6J-8811	1.250"	4.50"	
R-500	HL-3G-0500	1.250"	6.00"	102-9062
R-550				6Y-2443



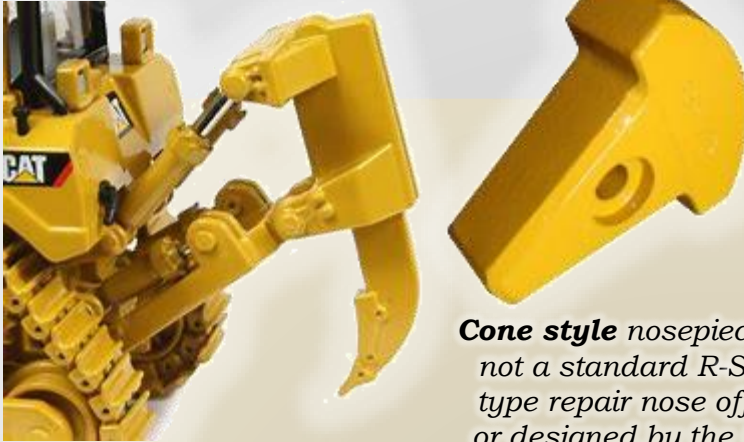
Series	Part Number	ID	OD	Other Part Numbers
R-200	HL-4T-0001	0.417"	0.91"	8E-6209
R-250	HL-3G-9609	0.535"	1.18"	133-0699
R-300	HL-1U-2405	0.720"	1.50"	114-0359, 7J-6845
R-350	HL-1U-2405	0.720"	1.50"	114-0359, 7J-6845
R-450	HL-8E-4743	0.970"	1.88"	8E-4749 (Bucket Type) 107-8559 (HD)
R-500	HL-6Y-1202	1.240"	2.50"	4T-4707 (Bucket Type) 6Y-1202 (Impact) 113-4709 (HD)
R-550	HL-6Y-1205	1.380"	2.75"	8E-2230 (Bucket Type) 6Y-1205 (Impact) 134-1809 (HD)



**Compression Ring
Hardware for R-Series
Caterpillar Ripper Shanks!**

Caterpillar® Style Repair and Conversion Noses

©H&L Tooth Company 2024



R-Series Ripper Replacement Nosepieces are not a stocking items, call to check availability.

“1812 CONE STYLE” REPAIR Nosepiece

Cone style nosepieces are not a standard R-Series type repair nose offered or designed by the OEM.

Caution should always be used when replacing the ripper nose angle. Specialty “1812 Cone” Nosepieces were designed & manufactured by H&L® Tooth Company since 1964!

Part Number	Weight	Tooth Series
HLS-CR1	2.8#	R-200
HLS-CR2	9.0#	R-250
HLS-CR3	12.5#	R-300
HLS-CR4	27.0#	R-350
HLS-CR5	38.0#	R-450
HLS-CR6	79.0#	R-500

Nosepiece for R-450 SERIES Ripper Repair or Conversion

 <p>Use three HL-4T-2479 Pins and one 6J-8811 Pin</p> <p>HL-6J-8814 Protector</p> <p>Used on; D-9, D-9L D-8, D-8K, D8L</p> <p>HL-4T-9776 41.0#</p>	 <p>Use three HL-4T-2479 Pins and one 6J-8811 Pin</p> <p>HL-6J-8814 Protector</p> <p>Used on; D-9, D-9L D-8, D-8K, D8L</p> <p>HL-7J-1791 HL-4T-8315 179.0#</p>	 <p>Use three HL-6Y-3394 Pins and HL-8E-4743 Retainers</p> <p>HL-6J-8814 Protector</p> <p>Used on; D-9, D-9L D-8, D-8K, D8L</p> <p>HL-9U-9694 41.0#</p>	 <p>Use three HL-6Y-3394 Pins and HL-8E-4743 Retainers</p> <p>HL-6J-8814 Protector</p> <p>Used on; D-9, D-9L D-8, D-8K, D8L</p> <p>HL-8E-8418 179.0#</p>
--	--	--	---

Nosepiece for R-500 SERIES Ripper Repair or Conversion

 <p>Use three HL-6Y-1204 Pins and HL-6Y-1202 Retainers</p> <p>HL-9W-8365 Protector</p> <p>Used on; D-11N, D-10, D-10T D9L, D9</p> <p>HL-103-8115 160.0#</p>	 <p>Use three HL-3G-0500 Pins</p> <p>HL-3G-9594 Protector</p> <p>Used on; D-11N, D-10, D-10T D9L, D9</p> <p>HL-103-8115A 160.0#</p>	 <p>Use two HL-3G-0500 Pins</p> <p>HL-1U-3644 Protector</p> <p>Used on; D-11N D-10, D9L</p> <p>HL-3G-7505 140.0#</p>	 <p>Use two HL-3G-0500 Pins</p> <p>HL-1U-3644 Protector</p> <p>Used on; D-11N D-10, D9L</p> <p>HL-1U-3630 250.0#</p>
---	---	---	--

1-800-HL TOOTH

®Is a registered trademark of the respectively named Company.

All manufacturer's names, numbers, symbols and descriptions are used for reference purposes only.

Weld Repair and Conversion of Ripper Shank Noses

©H&L Tooth Company 2024

Nosepiece for R-550 SERIES Ripper Repair or Conversion



Use three
9N-4245 Pins
and 6Y-1205
Retainers

9N-4621
Protector

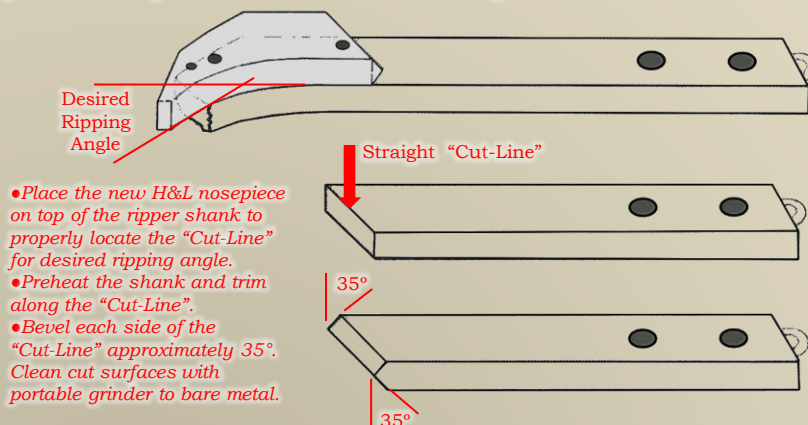
Used on;
D-11N

HL-104-9279
320.0#

R-550-Series Ripper Nosepieces
is not stocking items, call to check
availability.

Broken RIPPER Preparation

Welding instructions for the proper installation of a forged alloy steel repair nosepiece to a broken or conversion ripper shank. Due to the chemical composition and properties of forged alloy nosepiece, please follow these procedures to obtain the best possible result.



- Place the new H&L nosepiece on top of the ripper shank to properly locate the "Cut-Line" for desired ripping angle.
- Preheat the shank and trim along the "Cut-Line".
- Bevel each side of the "Cut-Line" approximately 35°. Clean cut surfaces with portable grinder to bare metal.

RIPPER Repair or Conversion Nosepiece Welding

1. Place the new nosepiece in welding position as shown in (figure 1). Tack weld as illustrated with gap. Use dry .188" or larger electrode type welding rod (A.W.S. Classification (E-7018)). **Check Quarter-Shank Nosepiece and broken ripper shank for straightness and alignment.**
2. While maintaining proper heat, apply first sealer bead on one side of the nosepiece and ripper shank, immediately proceeding with the second sealer bead on the opposite side (figure 2).
3. Clean sealer beads on both side between the nosepiece and ripper shank. Begin building up with a weave pattern of weld on successive welds (figure 3). **LET REPAIR OR CONVERSION WELDS COOL SLOWLY.**
4. Use hard-facing style welding rod on the last pass to provide abrasive wear resistance (figure 4). Grind the leading edge and trailing edge of the repair ripper shank until smooth.

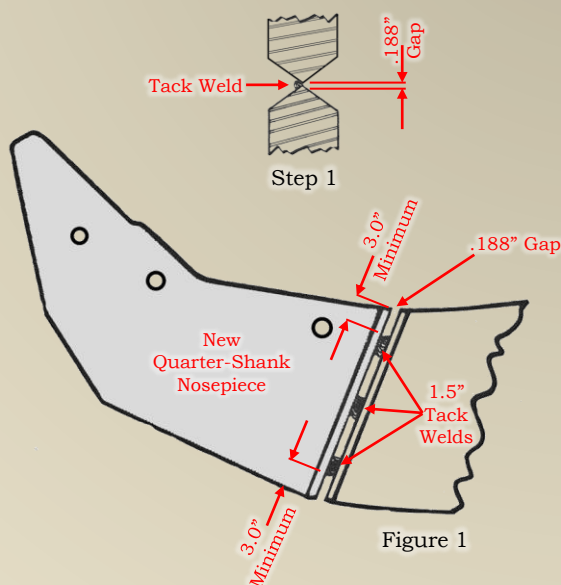
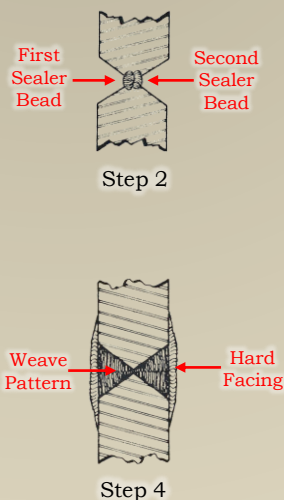


Figure 1



Step 4

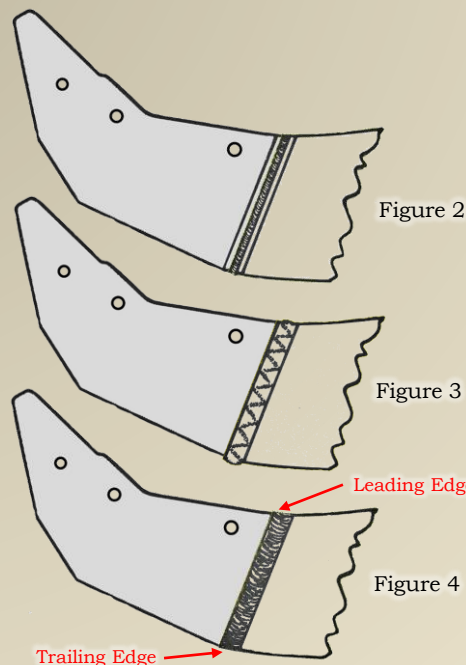
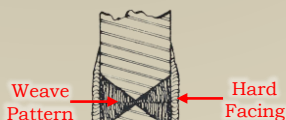


Figure 2

Figure 3

Figure 4



Trailing Edge

Leading Edge

®Is a registered trademark of the respectively named Company.

All manufacturer's names, numbers, symbols and descriptions are used for reference purposes only.

Caterpillar® Style VRS-50 Series

©H&L Tooth Company 2024

H&L® Introduces the “VRS-50 Vertical Retention Systems” for Caterpillar® Models 303/304 and 305 Mini Hydraulic Excavators. Cobra Teeth and Adapters are interchangeable with Cat® Parabolic® 156 Series.

H&L® offers the ONLY unforged® VRS-50 tooth in the World!

Bucket Groups 255-3405, 255-3398, 255-3392, 252-2623, 252-2600, 252-1616
 Bucket Assemblies 255-3406, 255-3399, 255-3393, 252-2624, 252-2601, 252-2617



C-156LPN
 Long Spiral Pin
 Replaces 238-3200

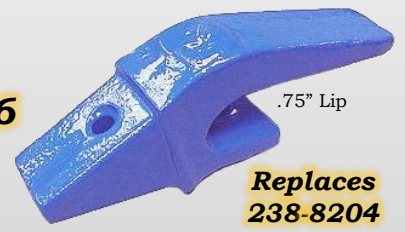


Caterpillar® PSK, page 127

303 CR/303C CR/303.5C CR BUCKET COMPONENTS (Cont'd.)		Excavators	
Bucket Group	255-3405	255-3398	255-3392
Bucket Assembly	255-3406	255-3399	255-3393
Tip Options	(3) 238-3202	(3) 238-3202	(4) 238-3202
VRS 50 Long	(3) 238-3206	(3) 238-3206	(4) 238-3206
VRS 50 Penetration	(3) 238-3207	(3) 238-3207	(4) 238-3207
VRS 50 Twin Sharp	(3) 238-3209	(3) 238-3209	(4) 238-3209
VRS 50 Sharp	(3) 238-3200	(3) 238-3200	(4) 238-3200
Retention Pin	(3) 4F-3656	(3) 4F-3656	(3) 4F-3656
Sidcenter (L/R)	(3) 4K-0367	(3) 4K-0367	(3) 4K-0367
Nut	(3) 4F-3656	(3) 4F-3656	(3) 4F-3656
Tip Options: HD — Heavy Duty	(3) 4K-0367	(3) 4K-0367	(3) 4K-0367
Tip Options: VRS — Vertical Retention System	(3) 4K-0367	(3) 4K-0367	(3) 4K-0367

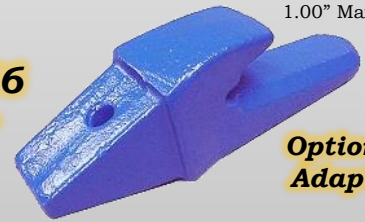
303 CR/303C CR/303.5C CR BUCKET COMPONENTS — Continued			
Bucket Group	303-1324	303-1325	303-1326
Bucket Assembly	303-1324	303-1325	303-1326
Tip - inches	12"	16"	18"
Tip - mm	305	405	457
Edge	HD	HD	HD
Number of Teeth	306-5658	290-2943	290-2944
In Adapter	3	3	3
Tip Options	(3) 119-3205	(3) 119-3205	(3) 119-3205
Tip Options (L/R)	(3) 119-3205	(3) 119-3205	(3) 119-3205
Tip Options (HD)	(3) 119-3205	(3) 119-3205	(3) 119-3205
Tip Options (VRS)	(3) 119-3205	(3) 119-3205	(3) 119-3205

C-230X156
 Adapter
 3.7#



75° Lip
 Replaces 238-8204

C-835X156
 Adapter
 3.5#



1.00" Max Lip
 Optional Adapter

C-550X156
 Adapter
 4.8#



1.00" Lip
 Optional Adapter

®Is a registered trademark of the respectively named Company.

All manufacturer's names, numbers, symbols and descriptions are used for reference purposes only.

Cat® Offered H&L® Original 230-Series

©H&L Tooth Company 2024

HERE'S AN ORIGINAL TIP!

"Give your mixed fleet the rugged durability of **FORGED** teeth",
H&L® Teeth since 1931...and still **Made in the USA!**

135-8233
230DFP
Flexpin



23DLFP
Flexpin



23FP
Flexpin

H&L®
ORIGINAL
Flexpin®

H&L®
ORIGINAL
Adapters

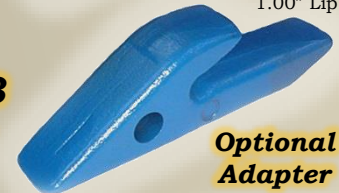
2740-ZW-23
Adapter



1.00" Lip

135-8234

D-834-23
Adapter



1.00" Lip

Optional
Adapter

L-4107-AAW-23
Adapter



1.00" Lip

Optional
Adapter

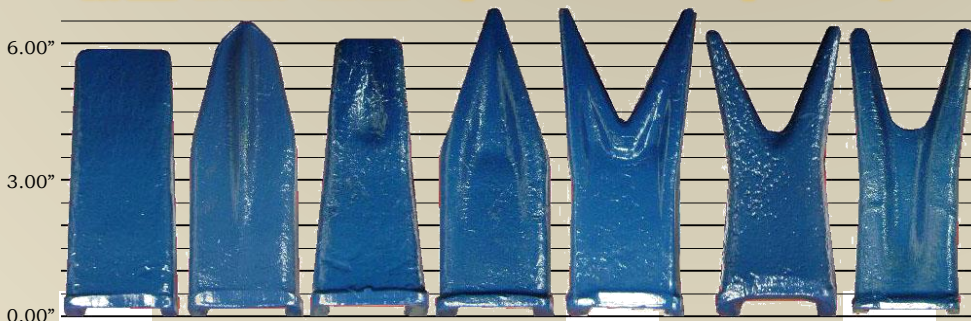
NEW Patented
230TR3
Tip



Optional
Triple Tiger®



135-8232 135-8238 135-8239 Optional 135-8237 Optional Optional



230SP Sharp Tip 230ST Star Tip 230CLAW Fangs Tip 230T9 Single Tiger 230TT7 Twin Tiger 230TTCLAW Twin Tiger 230CTT Twin Tiger

1-800-HL TOOTH

®Is a registered trademark of the respectively named Company.
All manufacturer's names, numbers, symbols and descriptions are used for reference purposes only.

H&L® Quality Uniteeth!

©H&L Tooth Company 2024



Fits all Caterpillar® Mini-Excavator, Backhoe and Loaders requiring the bolt-on 132-4720 or 9W-1879 Unitooth.

Fits Cat® Model:

Loaders
902, 906 and 908

Top Mounted
“1B” style
Unitooth

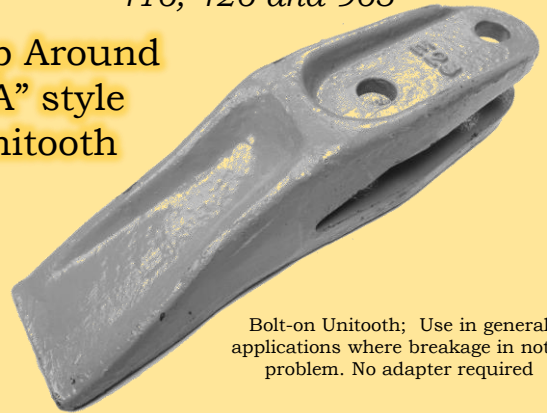


Bolt-on Unitooth; Use in general applications where breakage is not a problem. No adapter required

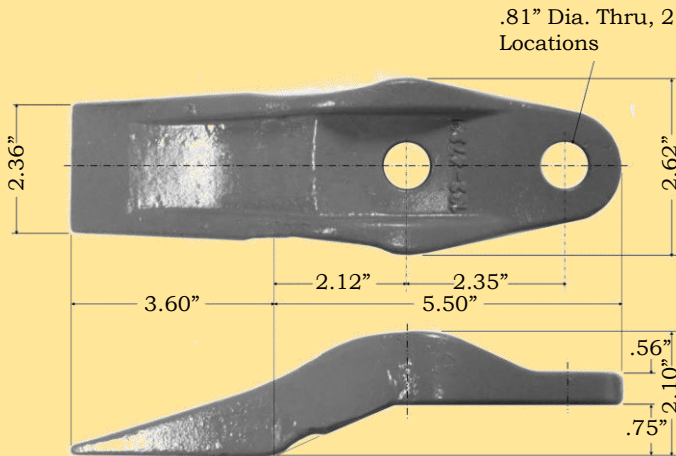
Fits Cat® Model:

Loaders
416, 426 and 963

Wrap Around
“1A” style
Unitooth

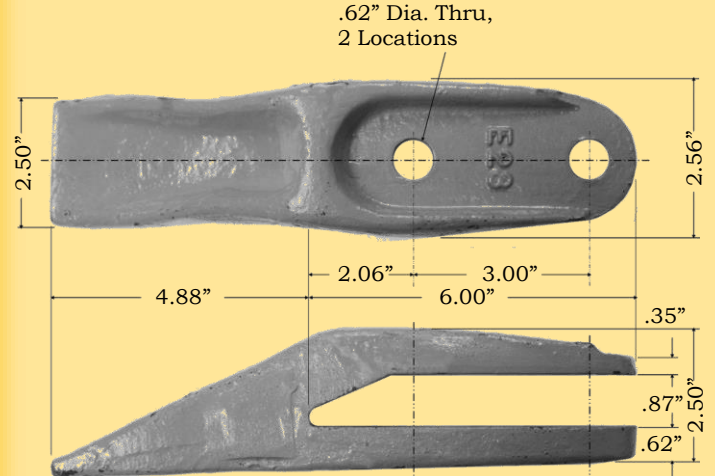


Bolt-on Unitooth; Use in general applications where breakage is not a problem. No adapter required



HL-132-4720 Unitooth

H&L® Uniteeth are specifically designed for Caterpillar application and meets or exceeds OEM specifications. Uniteeth and adapters with replaceable teeth are excellent for assisting in loading hard dirt, gravel and sand; making it a perfect asset for your ground-engaging machine. Our heavy-duty Uniteeth are made from Chrom-Moly-Nickel grade steels, heat-treated and tempered to supply maximum **GET** strength and hardness.



HL-9W-1879 Unitooth

Other Part Number E28

H&L® Uniteeth are specifically designed for Caterpillar application and meets or exceeds OEM specifications. Uniteeth and adapters with replaceable teeth are excellent for assisting in loading hard dirt, gravel and sand; making it a perfect asset for your ground-engaging machine. Our heavy-duty Uniteeth are made from Chrom-Moly-Nickel grade steels, heat-treated and tempered to supply maximum **GET** strength and hardness.

1-800-HL TOOTH

®Is a registered trademark of the respectively named Company.

All manufacturer's names, numbers, symbols and descriptions are used for reference purposes only.

Replace Your Cat Uniteeth

H&L® Two-Part 136 Assembly and Unitooth Systems!

©H&L Tooth Company 2024

Fits all Caterpillar® Excavator and Backhoe Loaders models using bolt-on 138-6410 Unitooth.



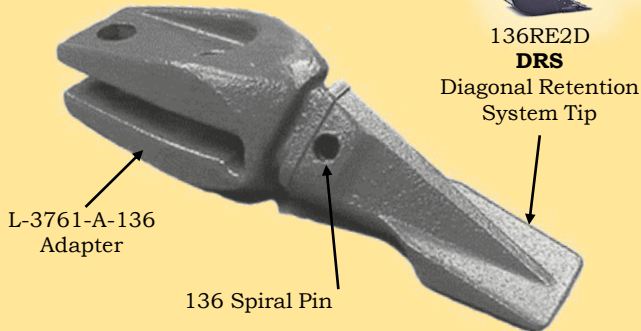
Fits all Caterpillar® Excavator and Backhoe Loaders models using bolt-on 138-6410 Unitooth.

Fits Cat® Model:

Excavators 301.5, 301.6, 302.5 and 303.5

Fits Cat® Model:

Excavators 301.5, 301.6, 302.5 and 303.5



Bolt-on Unitooth; Use in general applications where breakage is not a problem. No adapter required

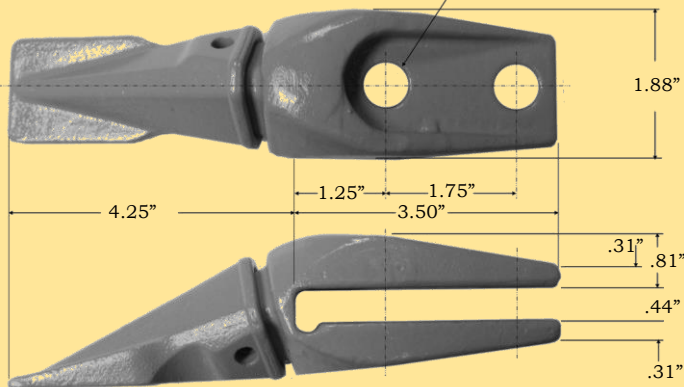
136 Series tips are "Value-Cast" reversible dual purpose designed for loaders or excavators

HL-138-6410 Uniteeth are "Value-Cast" and designed and hardness checked to meet or exceed OEM standards!

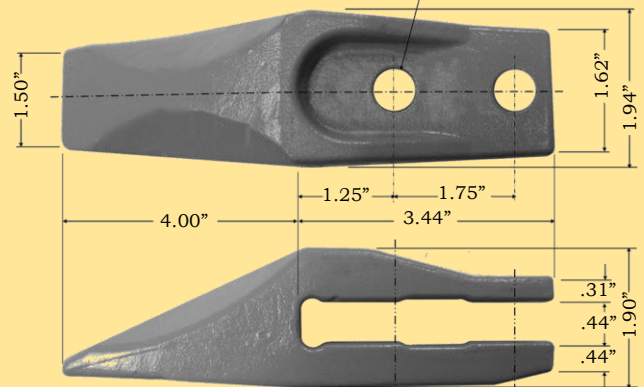
REPLACEABLE TIPS AT A FRACTION OF THE COST OF A UNITOOTH!

Wrap Around "1A" style Unitooth

.56" Dia. Thru, 2 Locations



.56" Dia. Thru, 2 Locations



136 Series Spiral Pin

138-6410 UNITOOTH

2.3#/1.04 kgs

L-3761-A-136RE2D ASSEMBLY

2.8#/1.27 kgs

H&L® Uniteeth are specifically designed for Caterpillar application and meets or exceeds OEM specifications. Uniteeth and adapters with replaceable teeth are excellent for assisting in loading hard dirt, gravel and sand; making it a perfect asset for your ground-engaging machine. Our heavy-duty Uniteeth are made from Chrom-Moly-Nickel grade steels, heat-treated and tempered to supply maximum **GET** strength and hardness.

1-800-HL TOOTH

®Is a registered trademark of the respectively named Company.

All manufacturer's names, numbers, symbols and descriptions are used for reference purposes only.

Replace Your Cat Uniteeth

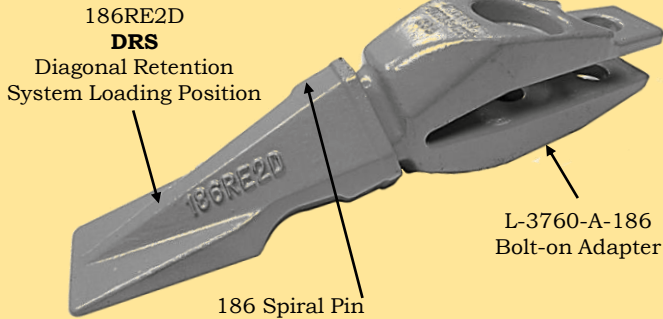
H&L® Two-Part 186 Series Assembly!

©H&L Tooth Company 2024

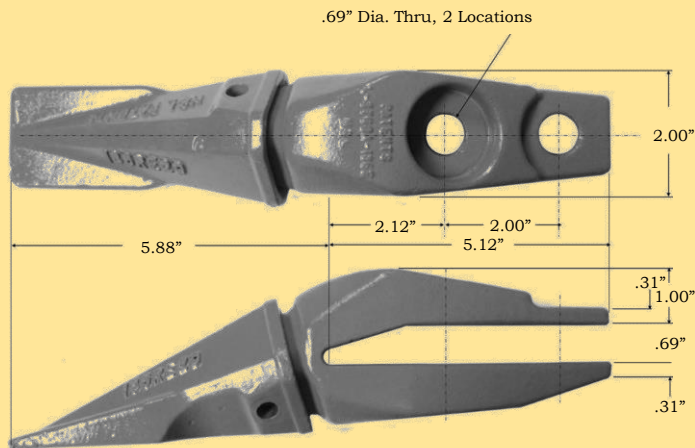
Fits all Caterpillar® Excavator and Backhoe Loaders models using bolt-on 135-9390 Unitooth.

Fits Cat® Model:

Excavators 301.5, 301.6 and 301.8



186 Series replaceable tips are "Value-Cast" reversible dual purpose designed for loaders or excavators!



**186 Series
Spiral Pin**

L-3760-A-186RE2D ASSEMBLY

6.8#/3.08 kgs

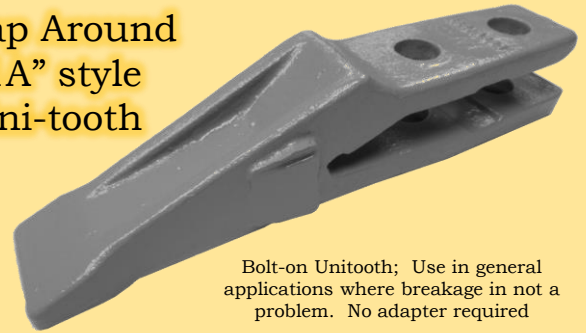
REPLACEABLE TIPS AT A FRACTION OF THE COST OF A UNITOOTH!

Fits all Caterpillar® Excavator and Backhoe Loaders models using bolt-on 135-9390 Unitooth.

Fits Cat® Model:

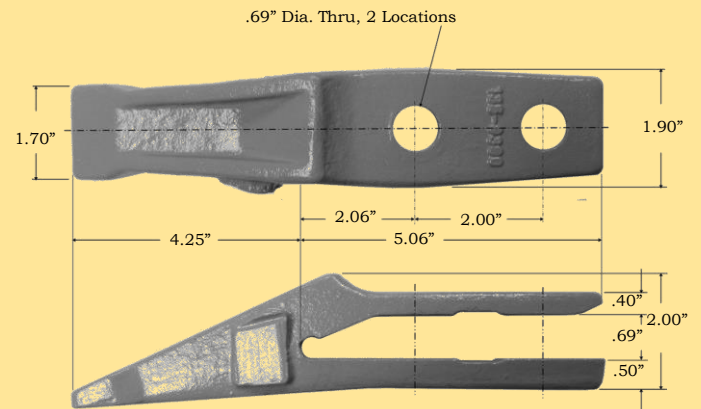
Excavators 301.5, 301.6 and 301.8

**Wrap Around
"1A" style
Uni-tooth**



Bolt-on Unitooth; Use in general applications where breakage is not a problem. No adapter required

HL-135-9390 Uniteeth are "Value-Cast" and designed and hardness checked to meet or exceed OEM standards!



135-9390 UNITOOTH

4.0#/1.82 kgs

H&L® Uniteeth are specifically designed for Caterpillar application and meets or exceeds OEM specifications. Uniteeth and adapters with replaceable teeth are excellent for assisting in loading hard dirt, gravel and sand; making it a perfect asset for your ground-engaging machine. Our heavy-duty Uniteeth are made from Chrom-Moly-Nickel grade steels, heat-treated and tempered to supply maximum **GET** strength and hardness.

1-800-HL TOOTH

®Is a registered trademark of the respectively named Company.

All manufacturer's names, numbers, symbols and descriptions are used for reference purposes only.

Replace Your 135-8203 Uniteeth

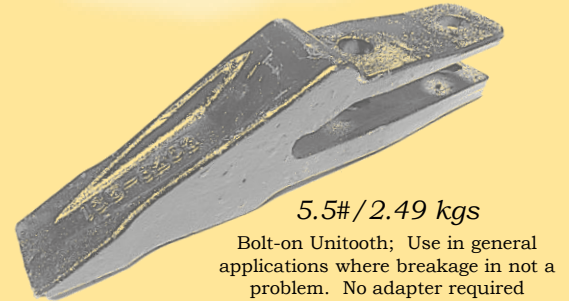
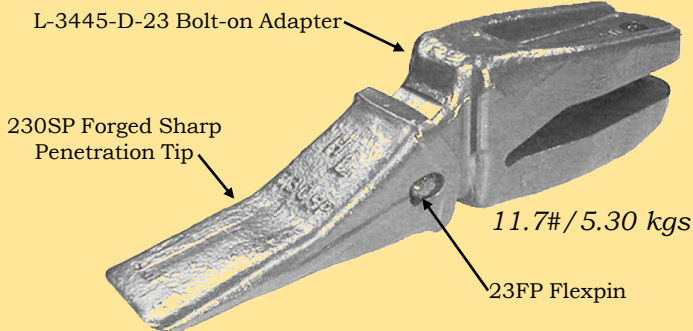
H&L® Two-Part 230 Series Adapter System!

©H&L Tooth Company 2024

Fits all Caterpillar® Excavator and Backhoe Loaders models using bolt-on 135-8203 Unitooth.

Fits Cat® Model:

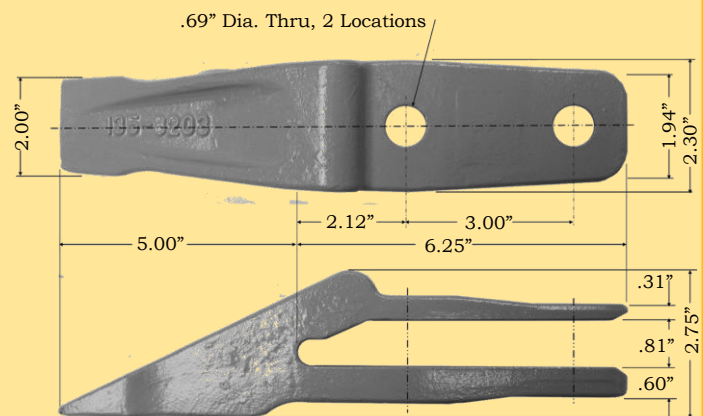
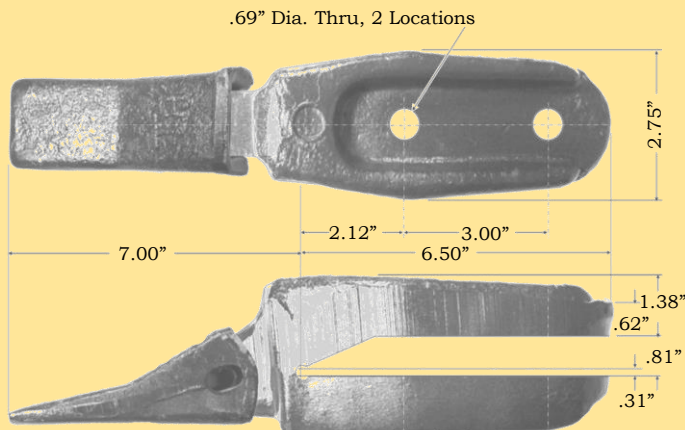
Excavators 304.5;
Backhoe-Loader 416, 420, 422, 424, 426, 428, 430, 432,
434, 436, 438, 442 and 444!



H&L® has the LARGEST 230 Series Backhoe Tooth offering in the World!

Tips Forged in the USA, "Value-Cast", Lip Saving Teeth, Triple Tiger® Trident®, Stars, Fangs, Flared, Single and Twin Tigers

H&L's HL-135-8203 re-engineered bolt-on Unitooth replacements. Wrap Around "1A" style Unitooth



L-3445-D-230SP ASSEMBLY

HL-135-8203 UNITOOTH

23 SERIES Flexpins®

23FP

"The Original" Flexpin®

230DFP

Longer Flexpin®

23DLFP

Dual Locking Flexpin®



H&L® Uniteeth are specifically designed for Caterpillar application and meets or exceeds OEM specifications. Uniteeth and adapters with replaceable teeth are excellent for assisting in loading hard dirt, gravel and sand; making it a perfect asset for your ground-engaging machine. Our heavy-duty Uniteeth are made from Chrom-Moly-Nickel grade steels, heat-treated and tempered to supply maximum **GET** strength and hardness.

1-800-HL TOOTH

®Is a registered trademark of the respectively named Company.
All manufacturer's names, numbers, symbols and descriptions are used for reference purposes only.

H&L® GET Products... Notes

©H&L Tooth Company 2024

Comments

1-800-HL TOOTH

®Is a registered trademark of the respectively named Company.

All manufacturer's names, numbers, symbols and descriptions are used for reference purposes only.

H&L® GET Products... Notes

©H&L Tooth Company 2024

Comments

Other Product Catalogs

H&L® Original Style Products: Catalog #209.2024

H&L® Cobra Line Products: Catalog #211.2024

H&L® Hensley® Style Products: Catalog #212.2023

H&L® Bobcat®, Komatsu® and Other Style Products: Catalog #213.2023

H&L® Whisler Mining & Ripper Products: Catalog #214.2023

H&L® Original 230-Series Products: Catalog #215.2024

H&L® Raw Steel Billet Ends: Catalog #223.2023

H&L® Original Fabricated Tooth Products: Catalog #242.2023

1-800-HL TOOTH

®Is a registered trademark of the respectively named Company.

All manufacturer's names, numbers, symbols and descriptions are used for reference purposes only.

H&L® FACTORY WARRANTY!

The H&L® Tooth Company warrants all H&L® Products against defects in material and workmanship.

Tulsa Oklahoma's 200,000 square foot manufacturing home includes forging, fabrication, and heat treating facilities, and serves as our central distribution complex.



Tulsa FORGE LINE consists of multiple 4"- 6"- 7 ½"- 9" National Upsetters, 1000, 1300, 2000 Ton National MaxiPres that will produce GET Products from 2 pounds to 2000 pounds.



**Over two million GET parts in our Shipping Department in Tulsa, Oklahoma.
H&L Tooth is an ISO 9001 CERTIFIED Company.**



**Patented
Auto-Welders**

H&L® Tooth Company Quality Policy

H&L® Tooth commits to meeting or exceeding internal and external customer requirements in its manufacturing and processing of ground engaging tools. This will be achieved by continually improving the effectiveness of our quality system through the establishment and tracking of quality objectives, identifying opportunities for improvements, and teamwork among our employees, customers and vendors.

1-800-HLTOOTH

www.hltooth.com