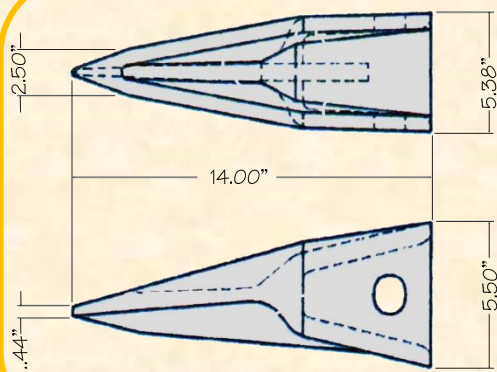
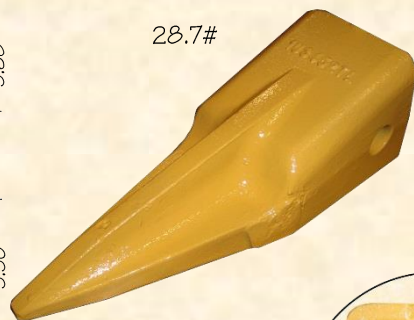


H&L "Cobra Line" J-450 Series Teeth fit all field CAT Style 450 Adapters.

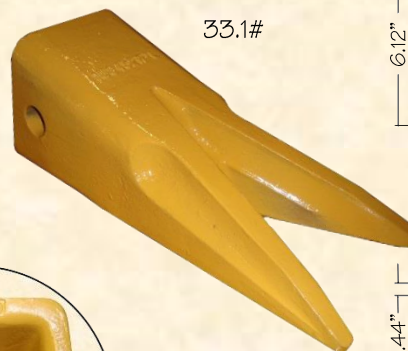
H&L offers a variety of J-450 series bolt-on and weld-on adapters!



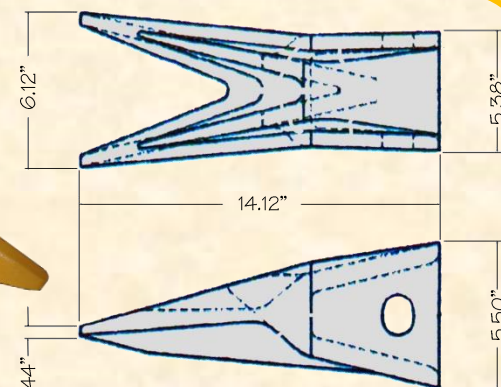
CX-1U-3452TL Single Tiger



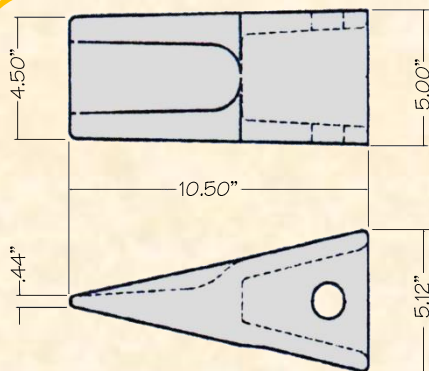
28.7#



33.1#



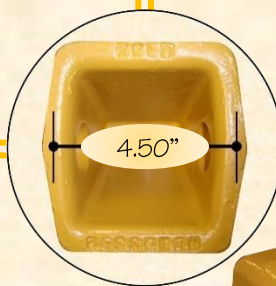
CX-1U-3452WTL Twin Tiger



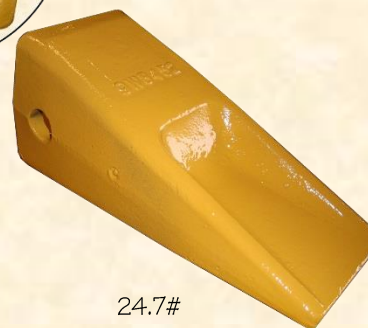
CX-1U-3451 Long Tooth



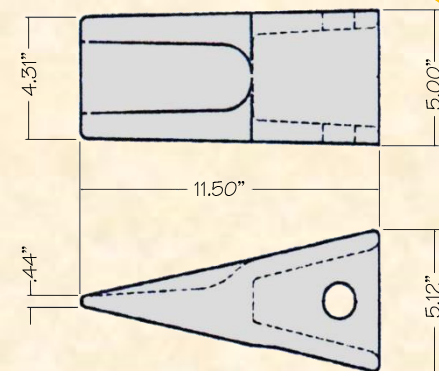
24.5#



4.50"



24.7#



CX-1U-3452 Long Tooth

ORIGINAL PRODUCT

H&L® TOOTH COMPANY

Factory in Tulsa, Oklahoma

"Cobra Line" Cat Style TEETH design

J-450 Series

Uses "Cobra Line" J-450 Pin and Retainers.

H&L Tooth Company History since 1931:

H&L J-450 series Value-Cast "Cobra Line" teeth meets or exceeds the OEM standards. All Value-Cast teeth are covered under H&L's standard warranty. H&L part numbers are CX-1U-3452, CX-9W-8451, CX-9W-8452, CX-1U-3452TL, CX-1U-3452WTL, CX-107-3450, CX-9N-8452SYL and CX-1U-3452RC.

Other part number references; 1U-3451, 1U-3452, 9W-8451, 9W-8452, 1U-3452TL, 1U-3452WTL, 107-3450, 9N-4453, 138-6458, 317-4456, 9N-8452SYL and 1U-3452RC.

H&L is an ISO CERTIFIED Company.

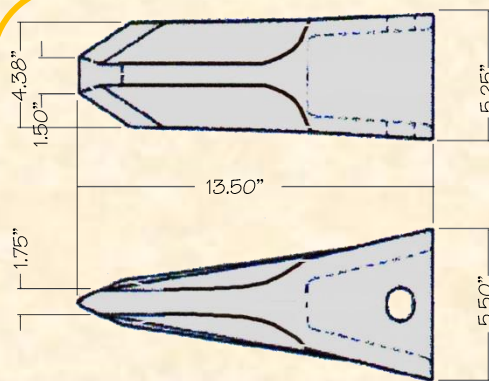
T314.2024

QUALITY
since 1931

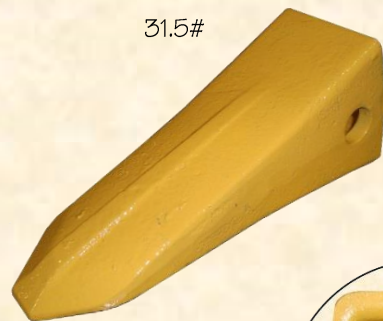
© H&L Tooth Company 2024

H&L "Cobra Line" J-450 Series Teeth fit all field CAT Style 450 Adapters.

H&L offers a variety of J-450 series bolt-on and weld-on adapters!



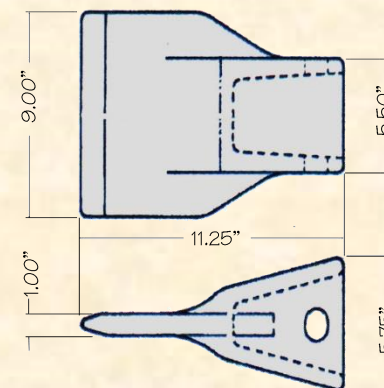
CX-1U-3452RC Rock Chisel



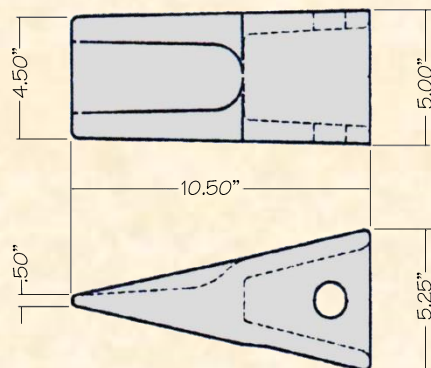
31.5#



31.7#



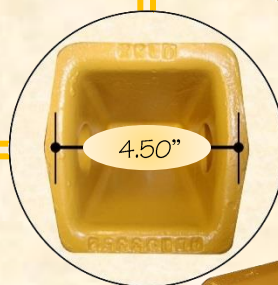
CX-107-3450 Flared Tooth



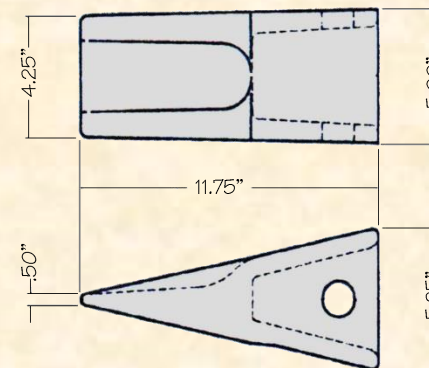
CX-9W-8451 Long Tooth



25.4#



26.0#



CX-9W-8452 Long Tooth

ORIGINAL PRODUCT

H&L® TOOTH COMPANY

Factory in Tulsa, Oklahoma

"Cobra Line" Cat Style TEETH design

J-450 Series

Uses "Cobra Line" J-450 Pin and Retainers.

H&L Tooth Company History since 1931:

H&L J-450 series Value-Cast "Cobra Line" teeth meets or exceeds the OEM standards. All Value-Cast teeth are covered under H&L's standard warranty. H&L part numbers are CX-1U-3452, CX-9W-8451, CX-9W-8452, CX-1U-3452TL, CX-1U-3452WTL, CX-107-3450, CX-9N-8452SYL and CX-1U-3452RC.

Other part number references; 1U-3451, 1U-3452, 9W-8451, 9W-8452, 1U-3452TL, 1U-3452WTL, 107-3450, 9N-4453, 138-6458, 317-4456, 9N-8452SYL and 1U-3452RC.

H&L is an ISO CERTIFIED Company.

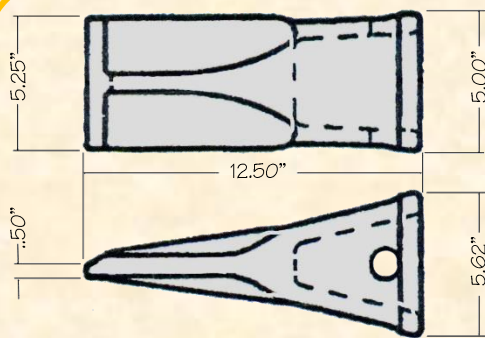
T314.2024.2

QUALITY
since 1931

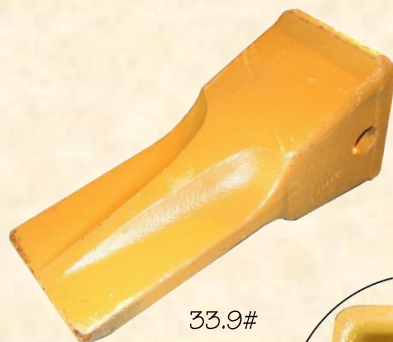
© H&L Tooth Company 2024

H&L "Cobra Line" J-450 Series Teeth fit all field CAT Style 450 Adapters.

H&L offers a variety of J-450 series bolt-on and weld-on adapters!



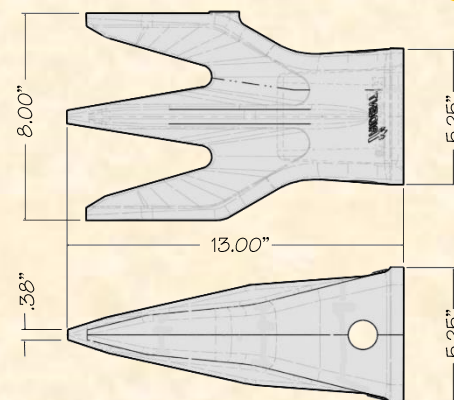
CX-9W-8452SYL General Purpose



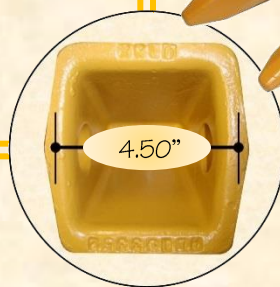
33.9#



30.0#



CX-1U-3452TR3 Triple Tiger



ORIGINAL PRODUCT H&L® TOOTH COMPANY

Factory in Tulsa, Oklahoma

"Cobra Line" Cat Style TEETH design

J-450 Series

Uses "Cobra Line" J-450 Pin and Retainers.

H&L Tooth Company History since 1931:

H&L J-450 series Value-Cast "Cobra Line" teeth meets or exceeds the OEM standards. All Value-Cast teeth are covered under H&L's standard warranty. H&L part numbers are CX-1U-3452, CX-9W-8451, CX-9W-8452, CX-1U-3452TL, CX-1U-3452WTL, CX-107-3450, CX-9N-8452SYL and CX-1U-3452RC.

Other part number references; 1U-3451, 1U-3452, 9W-8451, 9W-8452, 1U-3452TL, 1U-3452WTL, 107-3450, 9N-4453, 138-6458, 317-4456, 9N-8452SYL and 1U-3452RC.

H&L is an ISO CERTIFIED Company.

T314.2024.3

QUALITY
since 1931

© H&L Tooth Company 2024